

INSTALLATION NOTES:

- ONE (1) INSTALLATION ANCHOR IS REQUIRED AT EACH ANCHOR LOCATION SHOWN.
- THE NUMBER OF INSTALLATION ANCHORS DEPICTED IS THE MINIMUM NUMBER OF ANCHORS TO BE USED FOR PRODUCT INSTALLATION OF THE MAXIMUM SIZE LISTED.
- INSTALL INDIVIDUAL INSTALLATION ANCHORS WITHIN A TOLERANCE OF ±1/2 INCH (I.E., WITHOUT CONSIDERATION OF TOLERANCES). TOLERANCES ARE NOT CUMULATIVE FROM ONE INSTALLATION ANCHOR TO THE NEXT.
- SHIM AS REQUIRED AT EACH INSTALLATION ANCHOR WITH LOAD BEARING SHIM(S). MAXIMUM ALLOWABLE SHIM STACK TO BE 1/4 INCH. SHIM WHERE SPACE OF 1/16 INCH OR GREATER OCCURS. SHIM(S) SHALL BE CONSTRUCTED OF HIGH DENSITY PLASTIC OR BETTER.
- THROUGH FRAME/STRIKE:** FOR INSTALLATION INTO 2X WOOD FRAMING USE #12 WOOD SCREWS OF SUFFICIENT LENGTH TO ACHIEVE 1 1/2 INCH MINIMUM EMBEDMENT INTO WOOD SUBSTRATE AND MINIMUM 1" EDGE DISTANCE.
- THROUGH STRIKE:** FOR INSTALLATION THROUGH 1X BUCK TO CONCRETE/MASONRY, OR DIRECTLY INTO CONCRETE/MASONRY, USE 3/16 INCH DIAMETER ITW TAPCONS OF SUFFICIENT LENGTH TO ACHIEVE 1 1/4 INCH MINIMUM EMBEDMENT.
- THROUGH FRAME:** FOR INSTALLATION THROUGH 1X BUCK TO CONCRETE/MASONRY, OR DIRECTLY INTO CONCRETE/MASONRY, USE 1/4 INCH DIAMETER ITW TAPCONS OF SUFFICIENT LENGTH TO ACHIEVE 1 1/4 INCH MINIMUM EMBEDMENT.
- ANCHOR STRAP:** FOR INSTALLATION INTO 2X WOOD FRAMING USE TWO (2) #8 WOOD SCREWS PER ANCHOR STRAP OF SUFFICIENT LENGTH TO ACHIEVE 1 1/2 INCH MINIMUM EMBEDMENT INTO WOOD SUBSTRATE.
- ANCHOR STRAP:** FOR INSTALLATION THROUGH 1X BUCK TO CONCRETE/MASONRY USE TWO (2) 1/4 INCH DIAMETER ITW TAPCONS PER ANCHOR STRAP OF SUFFICIENT LENGTH TO ACHIEVE 1 1/4 INCH MINIMUM EMBEDMENT.
- MINIMUM EMBEDMENT AND EDGE DISTANCE EXCLUDE WALL FINISHES, INCLUDING BUT NOT LIMITED TO STUCCO, FOAM, BRICK VENEER, AND SIDING.
- INSTALLATION ANCHORS AND ASSOCIATED HARDWARE MUST BE MADE OF CORROSION RESISTANT MATERIAL OR HAVE A CORROSION RESISTANT COATING.
- FOR HOLLOW BLOCK AND GROUT FILLED BLOCK, DO NOT INSTALL INSTALLATION ANCHORS INTO MORTAR JOINTS. EDGE DISTANCE IS MEASURED FROM FREE EDGE OF BLOCK OR EDGE OF MORTAR JOINT INTO FACE SHELL OF BLOCK.
- INSTALLATION ANCHORS SHALL BE INSTALLED IN ACCORDANCE WITH ANCHOR MANUFACTURER'S INSTALLATION INSTRUCTIONS, AND ANCHORS SHALL NOT BE USED IN SUBSTRATES WITH STRENGTHS LESS THAN THE MINIMUM STRENGTH SPECIFIED BY THE ANCHOR MANUFACTURER.
- INSTALLATION ANCHOR CAPACITIES FOR PRODUCTS HEREIN ARE BASED ON SUBSTRATE MATERIALS WITH THE FOLLOWING PROPERTIES:
 - WOOD - MINIMUM SPECIFIC GRAVITY OF 0.55.
 - CONCRETE - MINIMUM COMPRESSIVE STRENGTH OF 3000 PSI.
 - GROUT-FILLED CMU- UNIT STRENGTH CONFORMS TO ASTM C-90 WITH MINIMUM COMPRESSIVE STRENGTH OF 2000 PSI AND GROUT CONFORMS TO ASTM C 476, MINIMUM GROUT COMPRESSIVE STRENGTH OF 2000 PSI.
 - HOLLOW BLOCK CMU - UNIT STRENGTH CONFORMS TO ASTM C-90 WITH MINIMUM COMPRESSIVE STRENGTH OF 2000 PSI.

JELD-WEN, inc.

CUSTOM CLAD EPIC OUTSWING DOORS (WZ3) (IMPACT)

GENERAL NOTES:

- THE PRODUCT SHOWN HEREIN IS DESIGNED AND MANUFACTURED TO COMPLY WITH THE CURRENT FLORIDA BUILDING CODE (FBC), EXCLUDING HVHZ AND HAS BEEN EVALUATED ACCORDING TO THE FOLLOWING:
 - ASTM E330-14
 - ASTM E1886-13
 - ASTM E1996-14
- ADEQUACY OF THE EXISTING STRUCTURAL CONCRETE/MASONRY AND 2X FRAMING AS A MAIN WIND FORCE RESISTING SYSTEM CAPABLE OF WITHSTANDING AND TRANSFERRING APPLIED PRODUCT LOADS TO THE FOUNDATION IS THE RESPONSIBILITY OF THE ENGINEER OR ARCHITECT OF RECORD FOR THE PROJECT OF INSTALLATION.
- 1X AND 2X BUCKS (WHEN USED) SHALL BE DESIGNED AND ANCHORED TO PROPERLY TRANSFER ALL LOADS TO THE STRUCTURE. BUCK DESIGN AND INSTALLATION IS THE RESPONSIBILITY OF THE ENGINEER OR ARCHITECT OF RECORD FOR THE PROJECT OF INSTALLATION.
- THE INSTALLATION DETAILS DESCRIBED HEREIN ARE GENERIC AND MAY NOT REFLECT ACTUAL CONDITIONS FOR A SPECIFIC SITE. IF SITE CONDITIONS CAUSE INSTALLATION TO DEVIATE FROM THE REQUIREMENTS DETAILED HEREIN, A LICENSED ENGINEER OR ARCHITECT SHALL PREPARE SITE SPECIFIC DOCUMENTS FOR USE WITH THIS DOCUMENT IN NON-HVHZ AREAS.
- APPROVED IMPACT PROTECTIVE SYSTEM **IS NOT REQUIRED** ON THIS PRODUCT IN AREAS REQUIRING IMPACT RESISTANCE IN WIND ZONE 3 OR LESS.
- APPROVED IMPACT PROTECTIVE SYSTEM **IS NOT REQUIRED** ON THIS PRODUCT IN AREAS REQUIRING IMPACT RESISTANCE IN WIND ZONE 4.
- DOOR FRAME MATERIAL: PRESSURE TREATED PINE
- DOOR CLADDING MATERIAL: ALUMINUM 6063-T5
- DISSIMILAR METALS INCLUDING FASTENERS THAT MAY COME INTO CONTACT WITH ALUMINUM UNIT FRAMING SHALL BE PROTECTED AS DEFINED IN THE CURRENT FBC.
- IN ACCORDANCE WITH CURRENT FBC, WOOD COMPONENTS SHALL HAVE BEEN PRESERVATIVE TREATED OR SHALL BE OF A DURABLE SPECIES.
- GLASS MEETS THE REQUIREMENTS OF ASTM E 1300-04 GLASS CHARTS. SEE SHEET 9 FOR GLAZING DETAILS.

| TABLE OF CONTENTS | |
|-------------------|---|
| SHEET | SHEET DESCRIPTION |
| 1 | INSTALLATION & GENERAL NOTES |
| 2 | ELEVATION & ANCHOR LAYOUT (1) |
| 3 | ELEVATION & ANCHOR LAYOUT (2) |
| 4 | ELEVATION & ANCHOR LAYOUT (3) |
| 5 | VERTICAL SECTIONS |
| 6 | HORIZONTAL SECTIONS |
| 7 | HORIZONTAL SECTIONS & MULLION CLIP DETAIL |
| 8 | ALTERNATE INSTALLATION STRAP DETAILS |
| 9 | GLAZING & RAISED PANEL DETAILS |
| 10 | HARDWARE STRIKE INSTALLATION DETAILS |
| 11 | TYPICAL HORIZONTAL SECTIONS |
| 12 | TYP. QUALIFIED CONFIGURATIONS |

MISSILE IMPACT RATING

LARGE & SMALL MISSILE IMPACT



JELD-WEN, inc.
3737 LAKEPORT BOULEVARD
KLAMATH FALLS, OR 97601
PH: (541) 882-3451 FX: (541) 850-2609

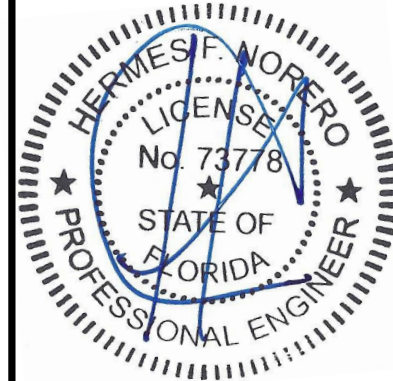
TITLE: CUSTOM CLAD EPIC WOOD OUTSWING DOORS (WZ3) (IMPACT) INSTALLATION & GENERAL NOTES

PREPARED BY: BUILDING DROPS, INC.
398 E. DANIA BEACH BLVD., STE. 338
DANIA BEACH, FL 33004
PH: (954)399-8478
FAX: (954)744-4738
WEB: www.buildingdrops.com



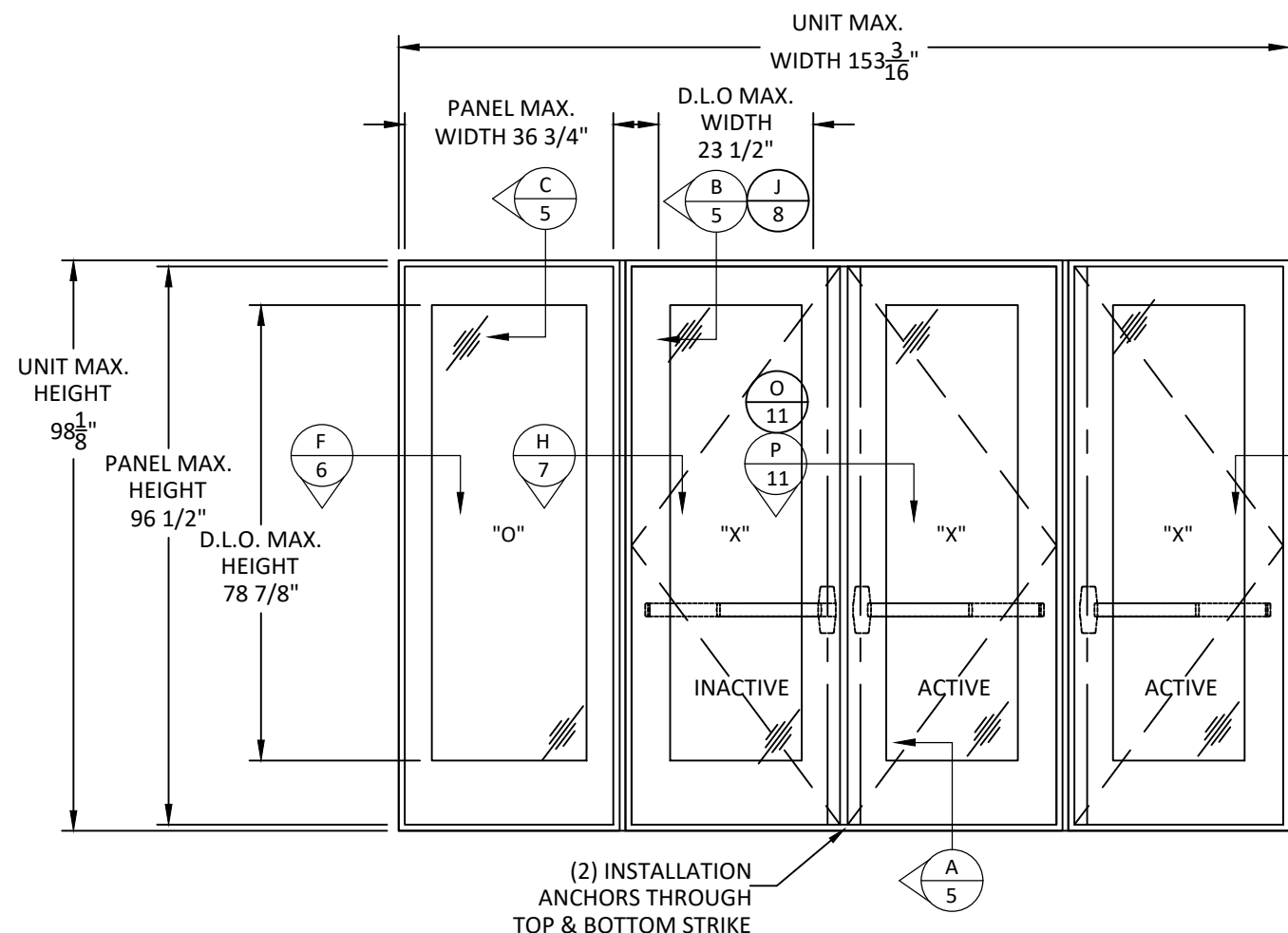
| REMARKS | BY | DATE |
|----------------------------|----|----------|
| ADDITIONAL HARDWARE OPTION | LS | 11.29.16 |
| 7TH FBC CODE CHANGE | SR | 4.07.20 |
| 8TH FBC CODE CHANGE | MG | 2.06.23 |

THE INSTALLATION DETAILS DESCRIBED HEREIN ARE GENERIC AND MAY NOT REFLECT ACTUAL CONDITIONS FOR A SPECIFIC SITE. IF SITE CONDITIONS CAUSE INSTALLATION TO DEVIATE FROM THE REQUIREMENTS DETAILED HEREIN, A LICENSED ENGINEER OR ARCHITECT SHALL PREPARE SITE SPECIFIC DOCUMENTS FOR USE WITH THIS DOCUMENT.

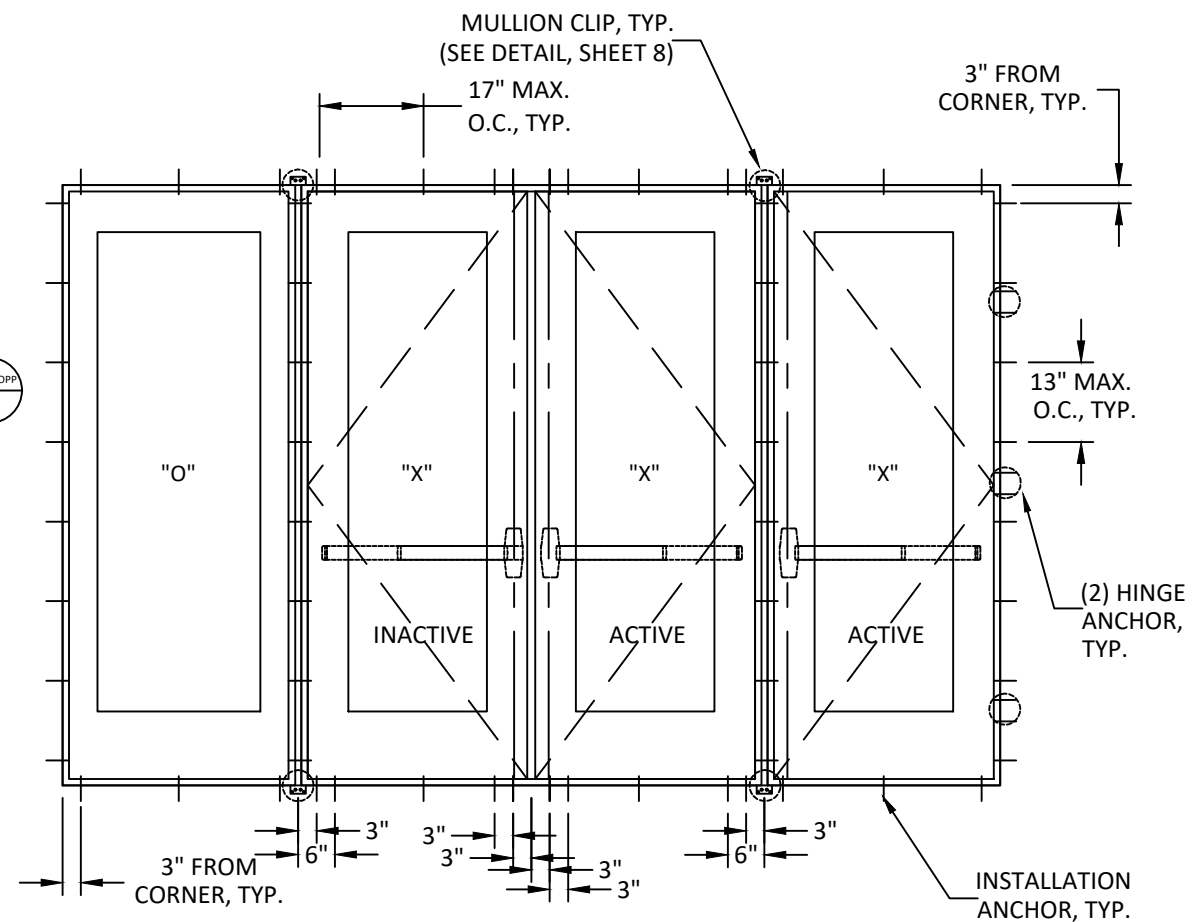


HERMES F. NORERO, P.E.
FLORIDA P.E. No. 73778
BUILDING DROPS, INC
398 E. DANIA BEACH BLVD. # 338
DANIA BEACH, FL 33004
FBPE CERT. OF AUTHORIZATION No. 29578

| | |
|-----------------------|---------------------|
| DATE: 06.30.15 | |
| DWG. BY: ADS | CHK. BY: HFN |
| SCALE: NTS | |
| DWG. #: JW037 | |
| SHEET | |
| 1 | |



TYPICAL ELEVATION



ANCHOR LAYOUT

| CONFIGURATION | UNIT WIDTH | UNIT HEIGHT | DESIGN PRESSURE RATING |
|------------------|------------|-------------|------------------------|
| O-XX-X O-XX-O | 153-3/16" | 98-1/8" | +50.0/-55.0 PSF |

NOTE:

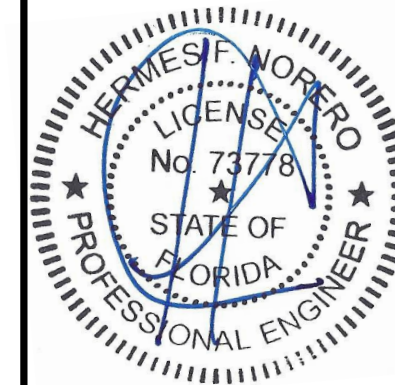
1. PRODUCTS SHOWN HEREIN DO NOT MEET WATER INFILTRATION REQUIREMENTS BASED UPON POSITIVE PRESSURE RATING. OVERHANG RATIO PROVIDED SHALL BE 1:1 WHERE WATER INFILTRATION PERFORMANCE IS REQUIRED
2. REFER TO SHEET 10 FOR INSTALLATION OF HARDWARE STRIKES AT HEAD & SILL
3. SEE SHEET 9 FOR GLAZING OPTIONS AND REQUIREMENTS.
4. QUALIFIED CONFIGURATION: OX, XO, OXX, XXO, OXO

TITLE: CUSTOM CLAD EPIC
WOOD OUTSWING DOORS
(WZ3) (IMPACT)
ELEVATION & ANCHOR LAYOUT
(1)

PREPARED BY:
BUILDING DROPS, INC.
398 E. DANIA BEACH BLVD., STE. 338
DANIA BEACH, FL 33004
PH: (954) 399-8478
FAX: (954) 744-4738
WEB: www.buildingdrops.com

| REMARKS | BY | DATE |
|----------------------------|----|----------|
| ADDITIONAL HARDWARE OPTION | LS | 11.29.16 |
| 7TH FBC CODE CHANGE | SR | 4.07.20 |
| 8TH FBC CODE CHANGE | MG | 2.06.23 |

THE INSTALLATION DETAILS DESCRIBED HEREIN ARE GENERIC AND MAY NOT REFLECT ACTUAL CONDITIONS FOR A SPECIFIC SITE. IF SITE CONDITIONS CAUSE INSTALLATION TO DEVIATE FROM THE REQUIREMENTS DETAILED HEREIN, A LICENSED ENGINEER OR ARCHITECT SHALL PREPARE SITE SPECIFIC DOCUMENTS FOR USE WITH THIS DOCUMENT.



HERMES F. NORERO, P.E.
FLORIDA P.E. No. 73778
BUILDING DROPS, INC.
398 E. DANIA BEACH BLVD. # 338
DANIA BEACH, FL 33004
FBPE CERT. OF AUTHORIZATION No. 29578

DATE: **06.30.15**

DWG. BY: **ADS** CHK. BY: **HFN**

SCALE: **NTS**

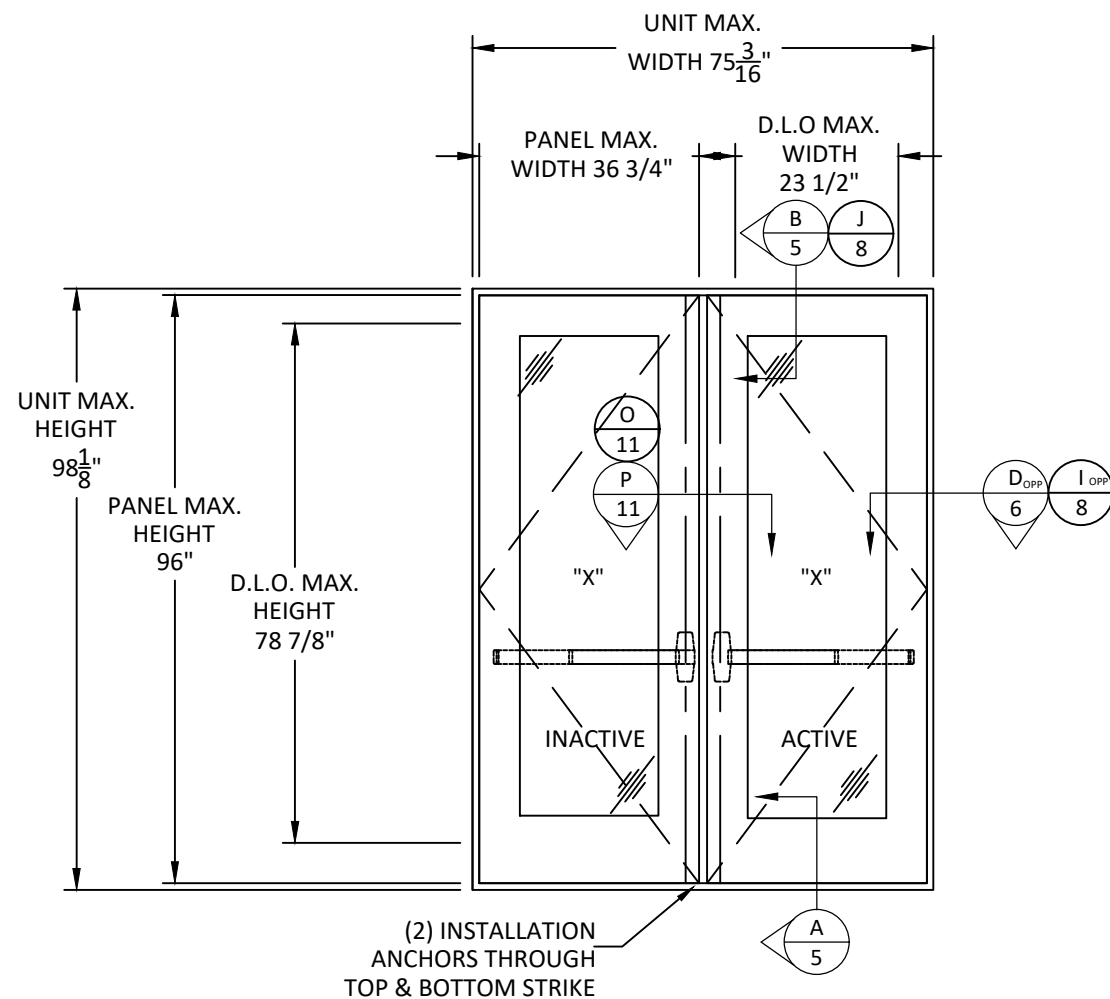
DWG. #: **JW037**

SHEET

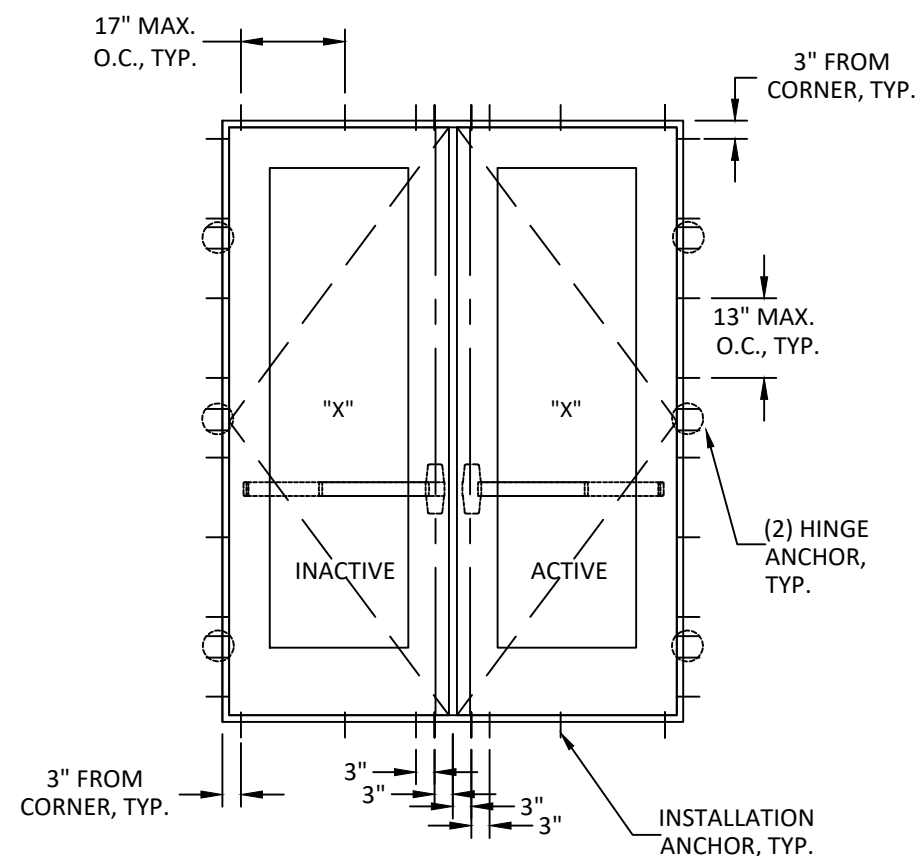
2

TITLE: CUSTOM CLAD EPIC
WOOD OUTSWING DOORS
(WZ3) (IMPACT)
ELEVATION & ANCHOR LAYOUT (2)

PREPARED BY:
BUILDING DROPS, INC.
398 E. DANIA BEACH BLVD., STE. 338
DANIA BEACH, FL 33004
PH: (954) 399-8478
FAX: (954) 744-4738
WEB: www.buildingdrops.com



TYPICAL ELEVATION



ANCHOR LAYOUT

(2) INSTALLATION ANCHORS THROUGH TOP & BOTTOM STRIKE

| CONFIGURATION | UNIT WIDTH | UNIT HEIGHT | DESIGN PRESSURE RATING |
|---------------|------------|-------------|------------------------|
| XX | 75-3/16" | 98-1/8" | +50.0/-55.0 PSF |

- NOTE:
1. PRODUCTS SHOWN HEREIN DO NOT MEET WATER INFILTRATION REQUIREMENTS BASED UPON POSITIVE PRESSURE RATING. OVERHANG RATIO PROVIDED SHALL BE 1:1 WHERE WATER INFILTRATION PERFORMANCE IS REQUIRED
 2. REFER TO SHEET 10 FOR INSTALLATION OF HARDWARE STRIKES AT HEAD & SILL
 3. SEE SHEET 9 FOR GLAZING OPTIONS AND REQUIREMENTS.

| REMARKS | BY | DATE |
|----------------------------|----|----------|
| ADDITIONAL HARDWARE OPTION | LS | 11.29.16 |
| 7TH FBC CODE CHANGE | SR | 4.07.20 |
| 8TH FBC CODE CHANGE | MG | 2.06.23 |

THE INSTALLATION DETAILS DESCRIBED HEREIN ARE GENERIC AND MAY NOT REFLECT ACTUAL CONDITIONS FOR A SPECIFIC SITE. IF SITE CONDITIONS CAUSE INSTALLATION TO DEVIATE FROM THE REQUIREMENTS DETAILED HEREIN, A LICENSED ENGINEER OR ARCHITECT SHALL PREPARE SITE SPECIFIC DOCUMENTS FOR USE WITH THIS DOCUMENT.



HERMES F. NORERO, P.E.
FLORIDA P.E. No. 73778
BUILDING DROPS, INC.
398 E. DANIA BEACH BLVD. # 338
DANIA BEACH, FL 33004
FBPE CERT. OF AUTHORIZATION No. 29578

| | | |
|----------|----------|--------------|
| DATE: | 06.30.15 | |
| DWG. BY: | ADS | CHK. BY: HFN |
| SCALE: | NTS | |
| DWG. #: | JW037 | |

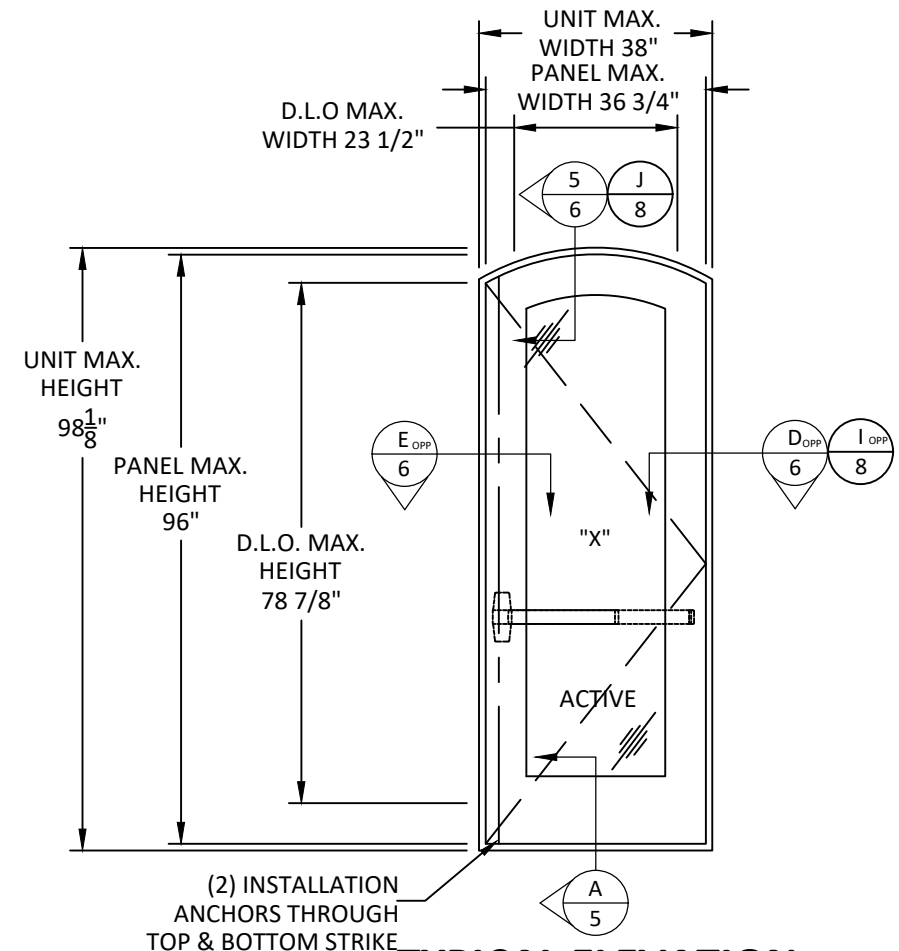
SHEET
3
OF 12

z:\projects\jeld-wen\cc-22-1133-1 - fbc submittal - 2023 code change\117568\dwgs\17568-1\jw037.dwg 2/21/2023 4:28 PM

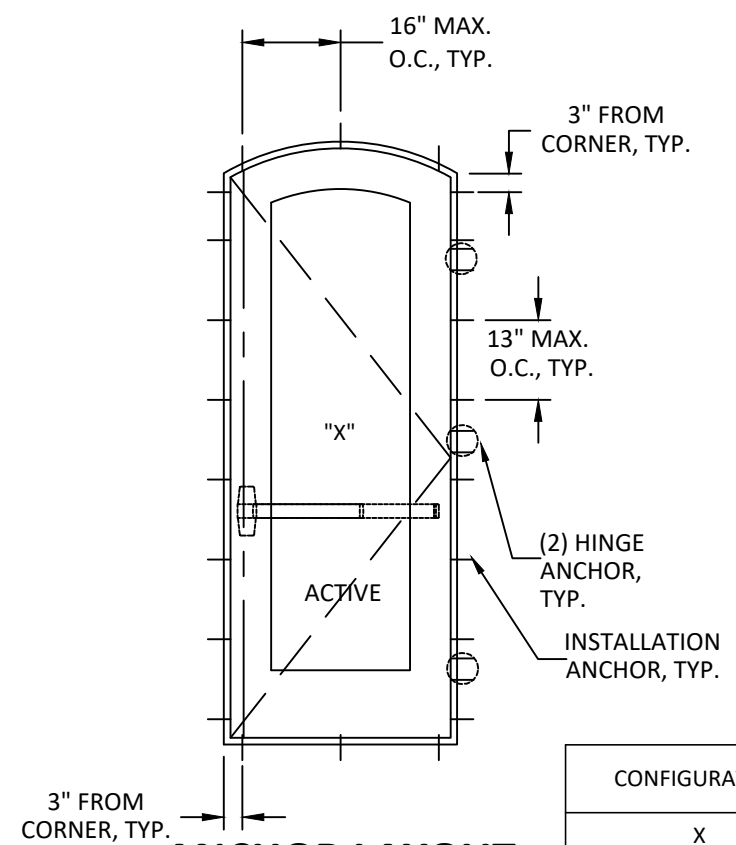
2/21/2023 4:28 PM
z:\projects\jeld-wen\cc-22-1133.1 - fbc submittal - 2023 code change\117568.dwg\117568.1\jw037.dwg

TITLE: **CUSTOM CLAD EPIC**
WOOD OUTSWING DOORS
(WZ3) (IMPACT)
ELEVATIONS & ANCHOR LAYOUTS
(3)

PREPARED BY:
BUILDING DROPS, INC.
398 E. DANIA BEACH BLVD., STE. 338
DANIA BEACH, FL 33004
PH: (954) 399-8478
FAX: (954) 744-4738
WEB: www.buildingdrops.com



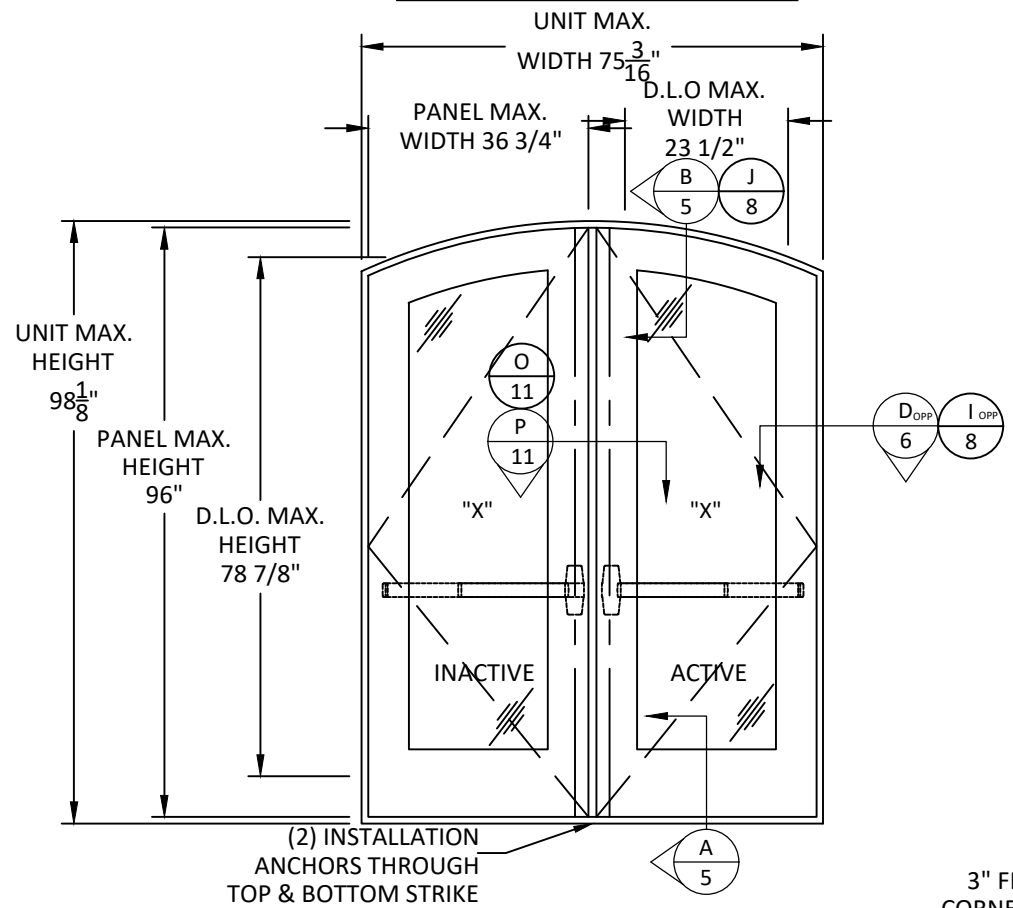
TYPICAL ELEVATION



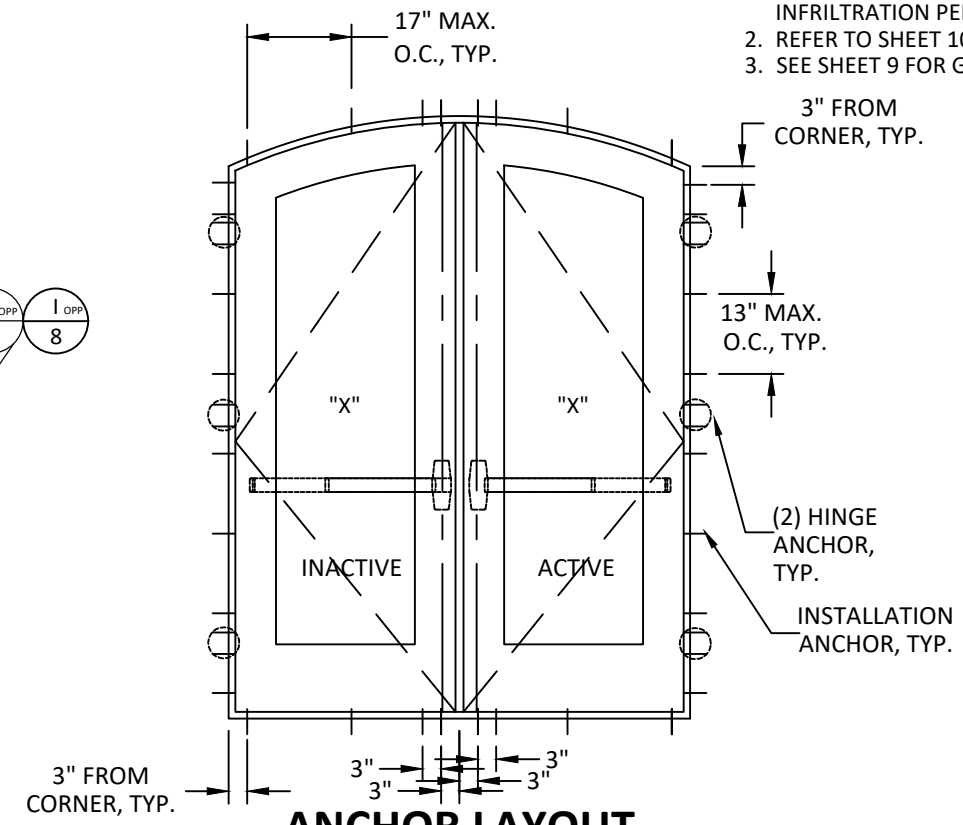
ANCHOR LAYOUT

| CONFIGURATION | UNIT WIDTH | UNIT HEIGHT | DESIGN PRESSURE RATING |
|---------------|------------|-------------|------------------------|
| X | 38" | 98-1/8" | +50.0/-55.0 PSF |
| XX | 75-3/16" | 98-1/8" | +50.0/-55.0 PSF |

- NOTE:**
1. PRODUCTS SHOWN HEREIN DO NOT MEET WATER INFILTRATION REQUIREMENTS BASED UPON POSITIVE PRESSURE RATING. OVERHANG RATIO PROVIDED SHALL BE 1:1 WHERE WATER INFILTRATION PERFORMANCE IS REQUIRED
 2. REFER TO SHEET 10 FOR INSTALLATION OF HARDWARE STRIKES AT HEAD & SILL
 3. SEE SHEET 9 FOR GLAZING OPTIONS AND REQUIREMENTS.



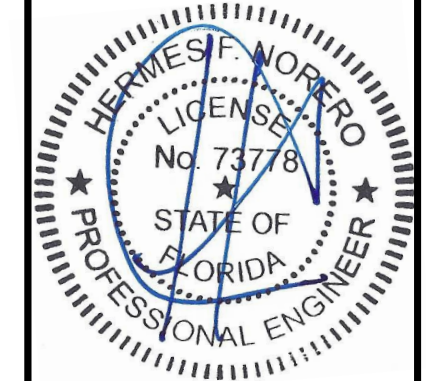
TYPICAL ELEVATION



ANCHOR LAYOUT

| REMARKS | BY | DATE |
|----------------------------|----|----------|
| ADDITIONAL HARDWARE OPTION | LS | 11.29.16 |
| 7TH FBC CODE CHANGE | SR | 4.07.20 |
| 8TH FBC CODE CHANGE | MG | 2.06.23 |

THE INSTALLATION DETAILS DESCRIBED HEREIN ARE GENERIC AND MAY NOT REFLECT ACTUAL CONDITIONS FOR A SPECIFIC SITE. IF SITE CONDITIONS CAUSE INSTALLATION TO DEVIATE FROM THE REQUIREMENTS DETAILED HEREIN, A LICENSED ENGINEER OR ARCHITECT SHALL PREPARE SITE SPECIFIC DOCUMENTS FOR USE WITH THIS DOCUMENT.

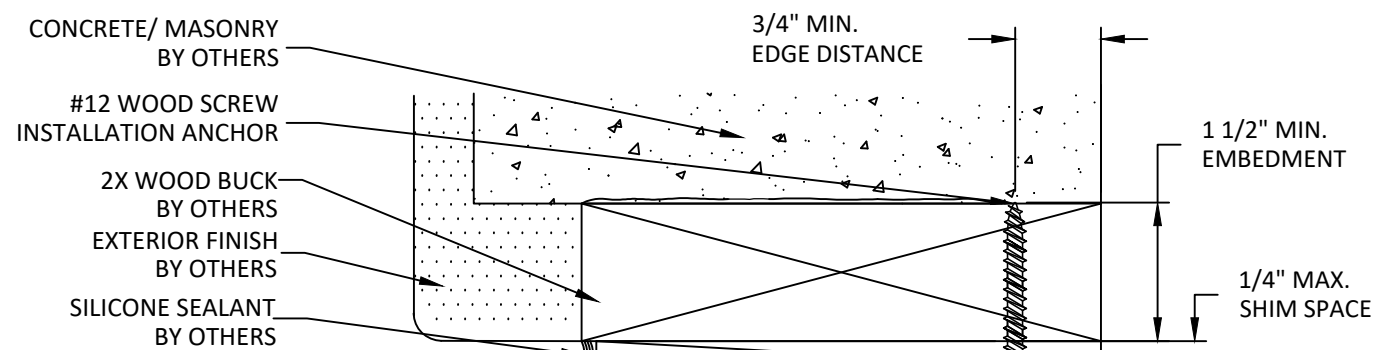


HERMES F. NORERO, P.E.
FLORIDA P.E. No. 73778
BUILDING DROPS, INC
398 E. DANIA BEACH BLVD. # 338
DANIA BEACH, FL 33004
FBPE CERT. OF AUTHORIZATION No. 29578

| | |
|----------|-----------------|
| DATE: | 06.30.15 |
| DWG. BY: | ADS |
| CHK. BY: | HFN |
| SCALE: | NTS |
| DWG. #: | JW037 |

SHEET
4
OF 12

2/21/2023 4:28 PM
 z:\projects\jeld-wen\cc-22-1133.1 - fbc submittal - 2023 code change\117568\dwg\17568.1\jw037.dwg



1" X 6-7/8" X 12 GA.
S.S. REINFORCING
PLATE AT CVR
SHOOT BOLT

O.A.
UNIT
HEIGHT

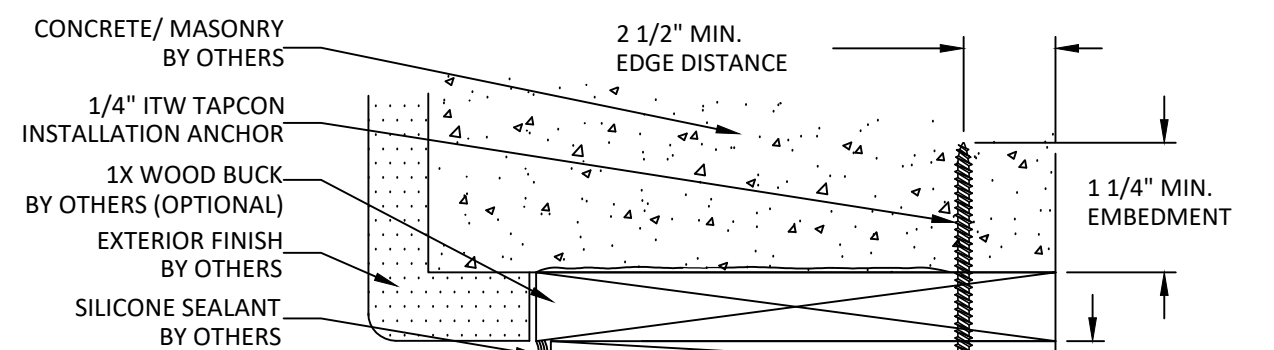
EXTERIOR

INTERIOR

SEE GLAZING
OPTIONS SHEET 9

B
5 VERTICAL SECTION
HEAD - 2X WOOD BUCK
THROUGH FRAME INSTALLATION, TYP.

NOTE: REFER TO SHEET 10
FOR HARDWARE STRIKE
INSTALLATION DETAILS



O.A.
UNIT
HEIGHT

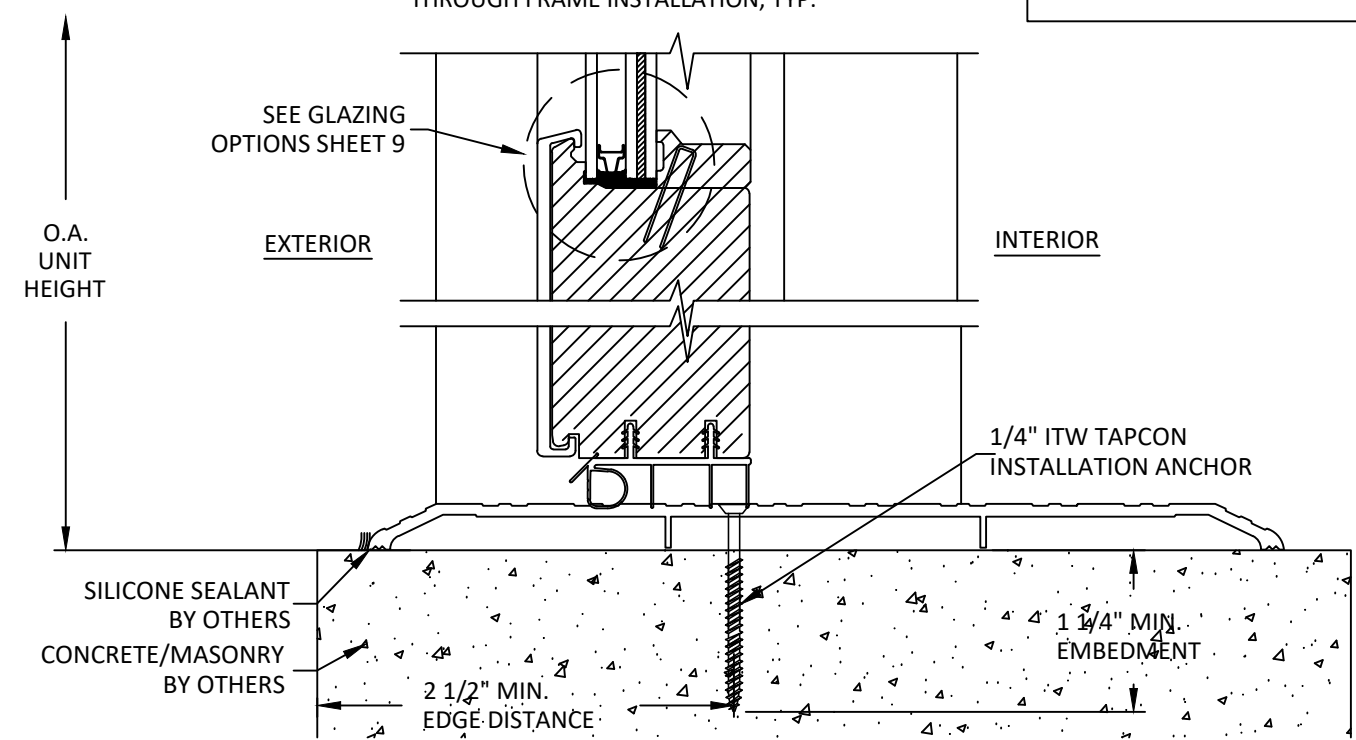
EXTERIOR

INTERIOR

#10 X 2-1/2" FHS
AT 11" O.C. AT HEAD

SEE GLAZING
OPTIONS SHEET 9

C
5 VERTICAL SECTION
FIXED HEAD - CONCRETE/MASONRY
THROUGH FRAME INSTALLATION, TYP.



O.A.
UNIT
HEIGHT

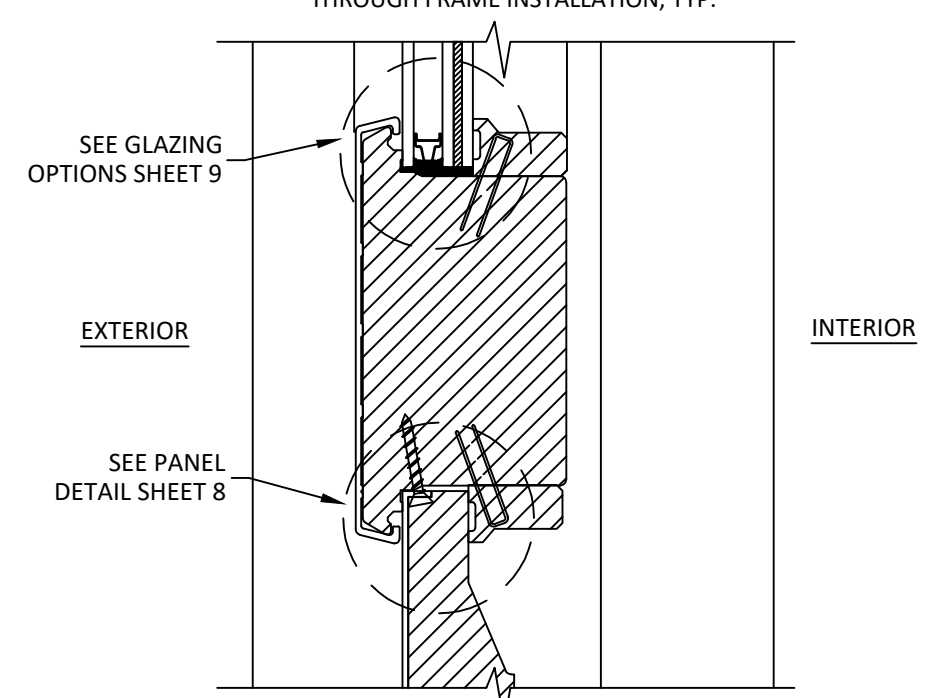
EXTERIOR

INTERIOR

SEE GLAZING
OPTIONS SHEET 9

1/4" ITW TAPCON
INSTALLATION ANCHOR

A
5 VERTICAL SECTION
SILL - CONCRETE/MASONRY
THROUGH FRAME INSTALLATION, TYP.



SEE GLAZING
OPTIONS SHEET 9

EXTERIOR

INTERIOR

SEE PANEL
DETAIL SHEET 8

D
5 VERTICAL SECTION
INTERMEDIATE RAIL, TYP.



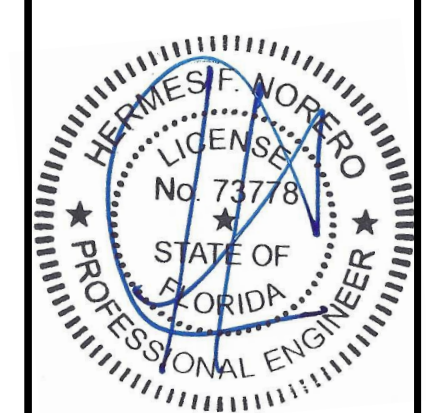
JELD-WEN, inc.
3737 LAKEPORT BOULEVARD
KLAMATH FALLS, OR 97601
PH: (541) 882-3451 FX: (541) 850-2609

TITLE: CUSTOM CLAD EPIC
WOOD OUTSWING DOORS
(WZ3) (IMPACT)
VERTICAL SECTIONS

PREPARED BY:
BUILDING DROPS, INC.
398 E. DANIA BEACH BLVD., STE. 338
DANIA BEACH, FL 33004
PH: (954) 399-8478
FX: (954) 744-4738
WEB: www.buildingdrops.com

| REMARKS | BY | DATE |
|----------------------------|----|----------|
| ADDITIONAL HARDWARE OPTION | LS | 11.29.16 |
| 7TH FBC CODE CHANGE | SR | 4.07.20 |
| 8TH FBC CODE CHANGE | MG | 2.06.23 |

THE INSTALLATION DETAILS DESCRIBED HEREIN ARE GENERIC AND MAY NOT REFLECT ACTUAL CONDITIONS FOR A SPECIFIC SITE. IF SITE CONDITIONS CAUSE INSTALLATION TO DEVIATE FROM THE REQUIREMENTS DETAILED HEREIN, A LICENSED ENGINEER OR ARCHITECT SHALL PREPARE SITE SPECIFIC DOCUMENTS FOR USE WITH THIS DOCUMENT.



HERMES F. NORERO, P.E.
FLORIDA P.E. No. 73778
BUILDING DROPS, INC.
398 E. DANIA BEACH BLVD. # 338
DANIA BEACH, FL 33004
FBPE CERT. OF AUTHORIZATION No. 29578

| | | |
|----------|----------|--------------|
| DATE: | 06.30.15 | |
| DWG. BY: | ADS | CHK. BY: HFN |
| SCALE: | NTS | |
| DWG. #: | JW037 | |

SHEET
5
OF 12

2/21/2023 4:27 PM
z:\projects\jeld-wen\cc-22-1133-1 - fbc submittal - 2023 code change\117568.dwg\117568-1\jw037.dwg

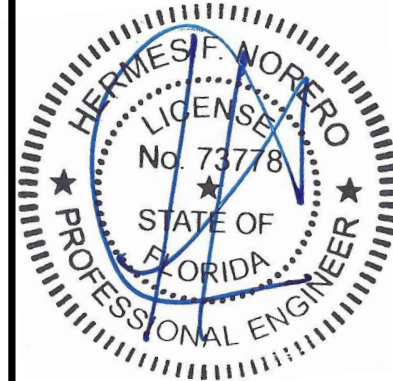
TITLE: CUSTOM CLAD EPIC
WOOD OUTSWING DOORS
(WZ3) (IMPACT)
HORIZONTAL SECTIONS

PREPARED BY:
BUILDING DROPS, INC.
398 E. DANIA BEACH BLVD., STE. 338
DANIA BEACH, FL 33004
PH: (954) 399-8478
FAX: (954) 744-4738
WEB: www.buildingdrops.com



| REMARKS | BY | DATE |
|----------------------------|----|----------|
| ADDITIONAL HARDWARE OPTION | LS | 11.29.16 |
| 7TH FBC CODE CHANGE | SR | 4.07.20 |
| 8TH FBC CODE CHANGE | MG | 2.06.23 |

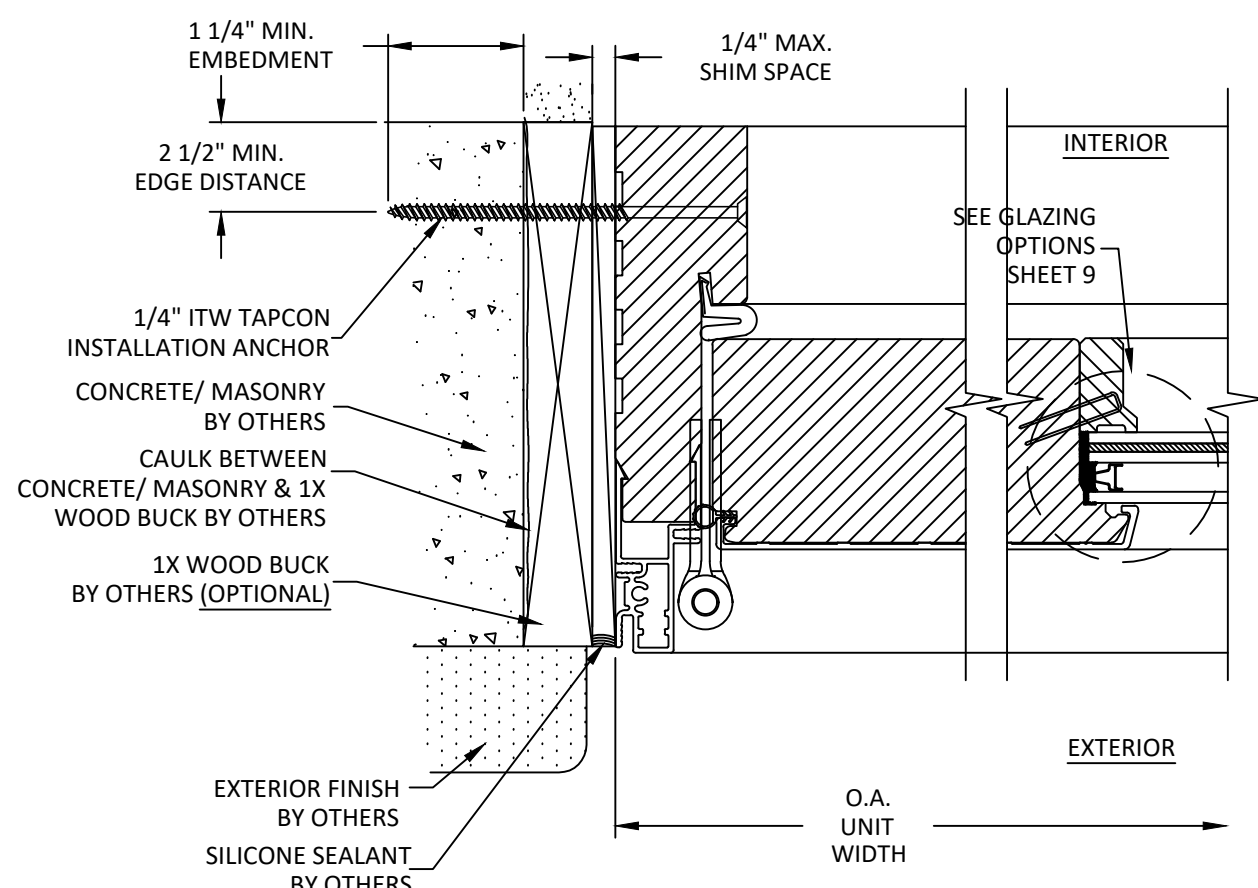
THE INSTALLATION DETAILS DESCRIBED HEREIN ARE GENERIC AND MAY NOT REFLECT ACTUAL CONDITIONS FOR A SPECIFIC SITE. IF SITE CONDITIONS CAUSE INSTALLATION TO DEVIATE FROM THE REQUIREMENTS DETAILED HEREIN, A LICENSED ENGINEER OR ARCHITECT SHALL PREPARE SITE SPECIFIC DOCUMENTS FOR USE WITH THIS DOCUMENT.



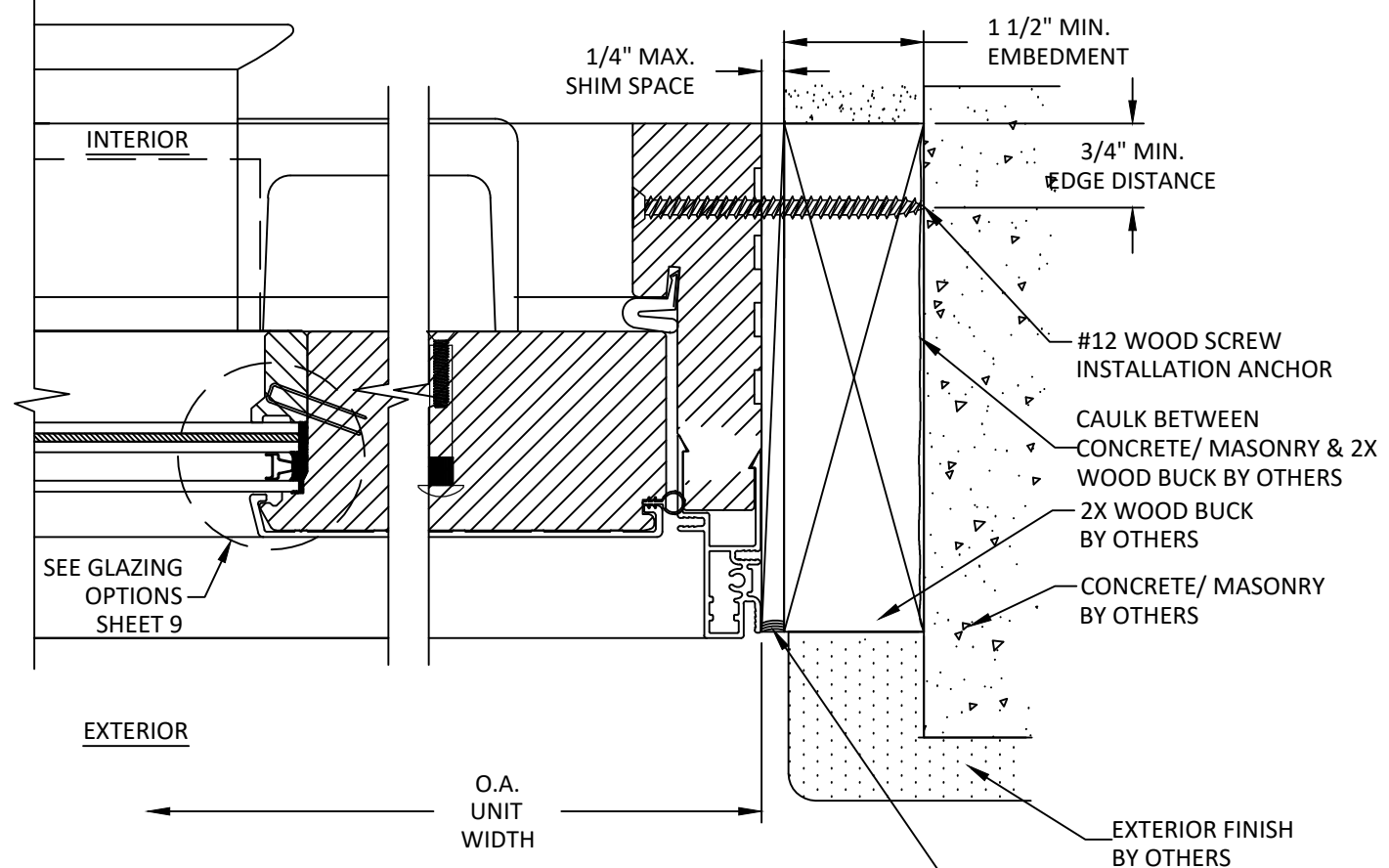
HERMES F. NORERO, P.E.
FLORIDA P.E. No. 73778
BUILDING DROPS, INC.
398 E. DANIA BEACH BLVD. # 338
DANIA BEACH, FL 33004
FBPE CERT. OF AUTHORIZATION No. 29578

| | | |
|----------|----------|--------------|
| DATE: | 06.30.15 | |
| DWG. BY: | ADS | CHK. BY: HFN |
| SCALE: | NTS | |
| DWG. #: | JW037 | |

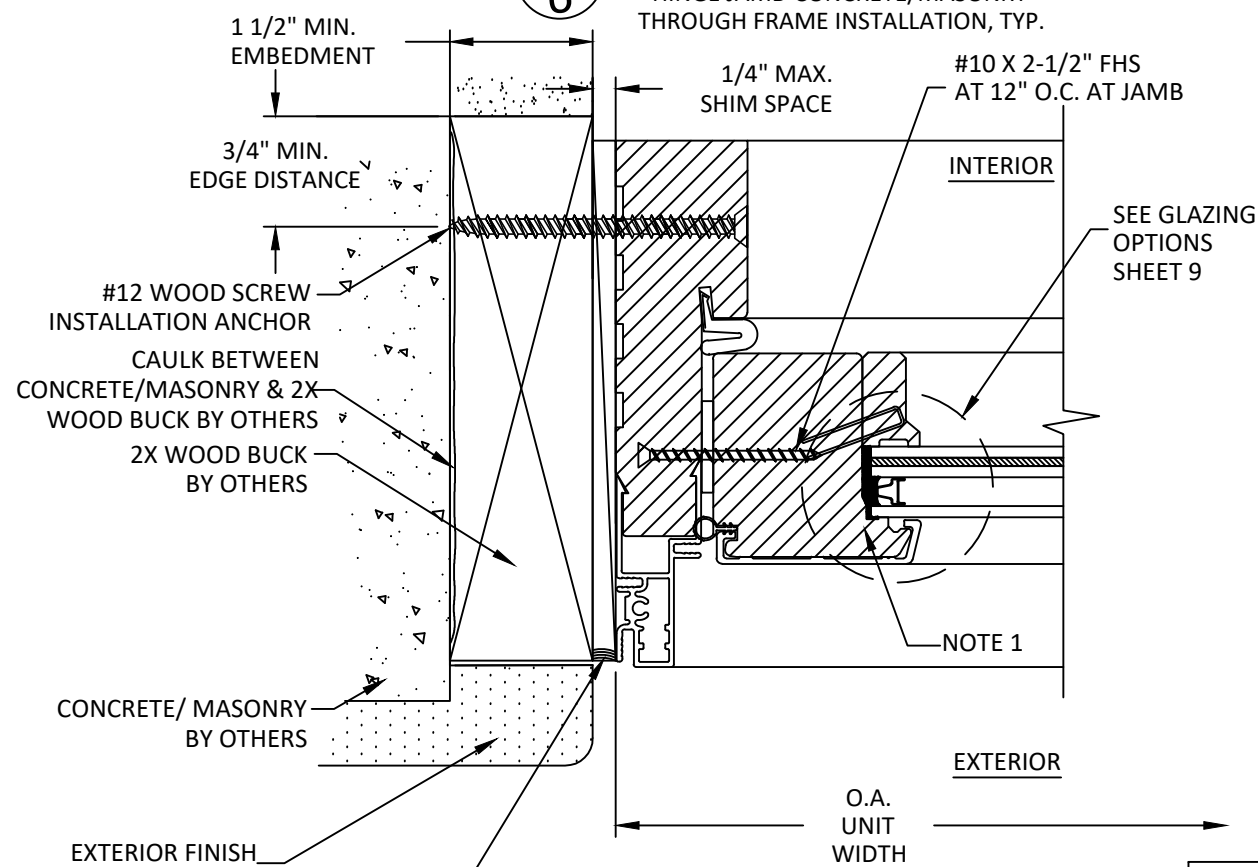
SHEET
6
OF 12



D
6 HORIZONTAL SECTION
HINGE JAMB-CONCRETE/MASONRY THROUGH FRAME INSTALLATION, TYP.



E
6 HORIZONTAL SECTION
LOCK JAMB-2X WOOD BUCK THROUGH FRAME INSTALLATION, TYP.

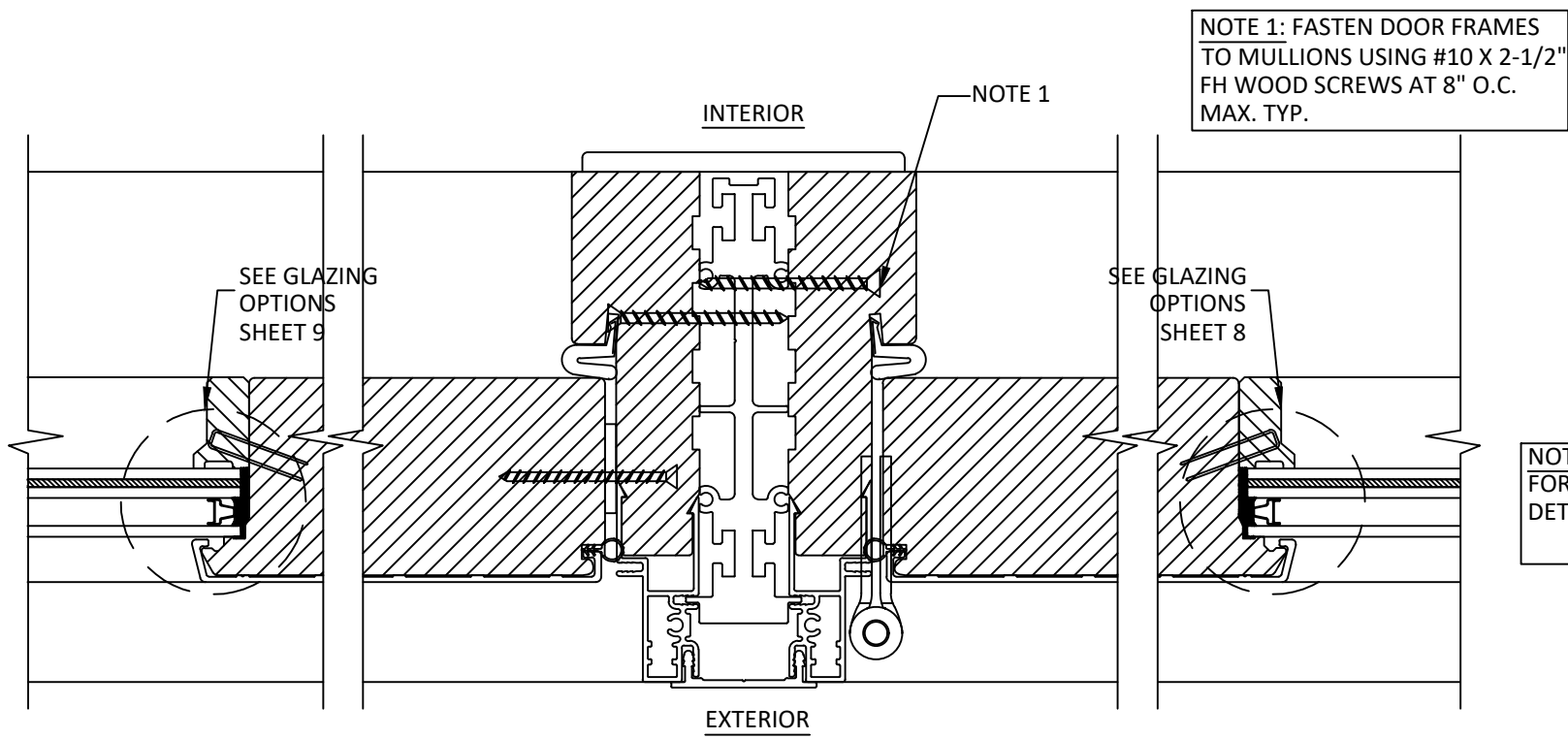


F
6 HORIZONTAL SECTION
SIDELITE JAMB - 2X WOOD BUCK THROUGH FRAME INSTALLATION, TYP.

NOTE 1: BOTH STANDARD OR ALTERNATE FIXED STILES ARE APPROVED FOR USE.

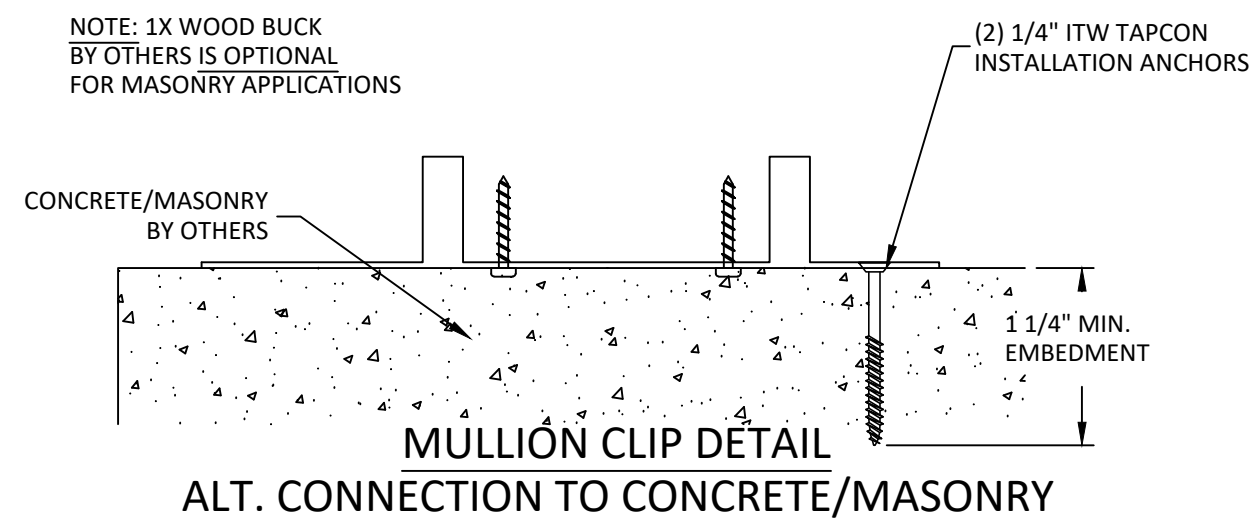
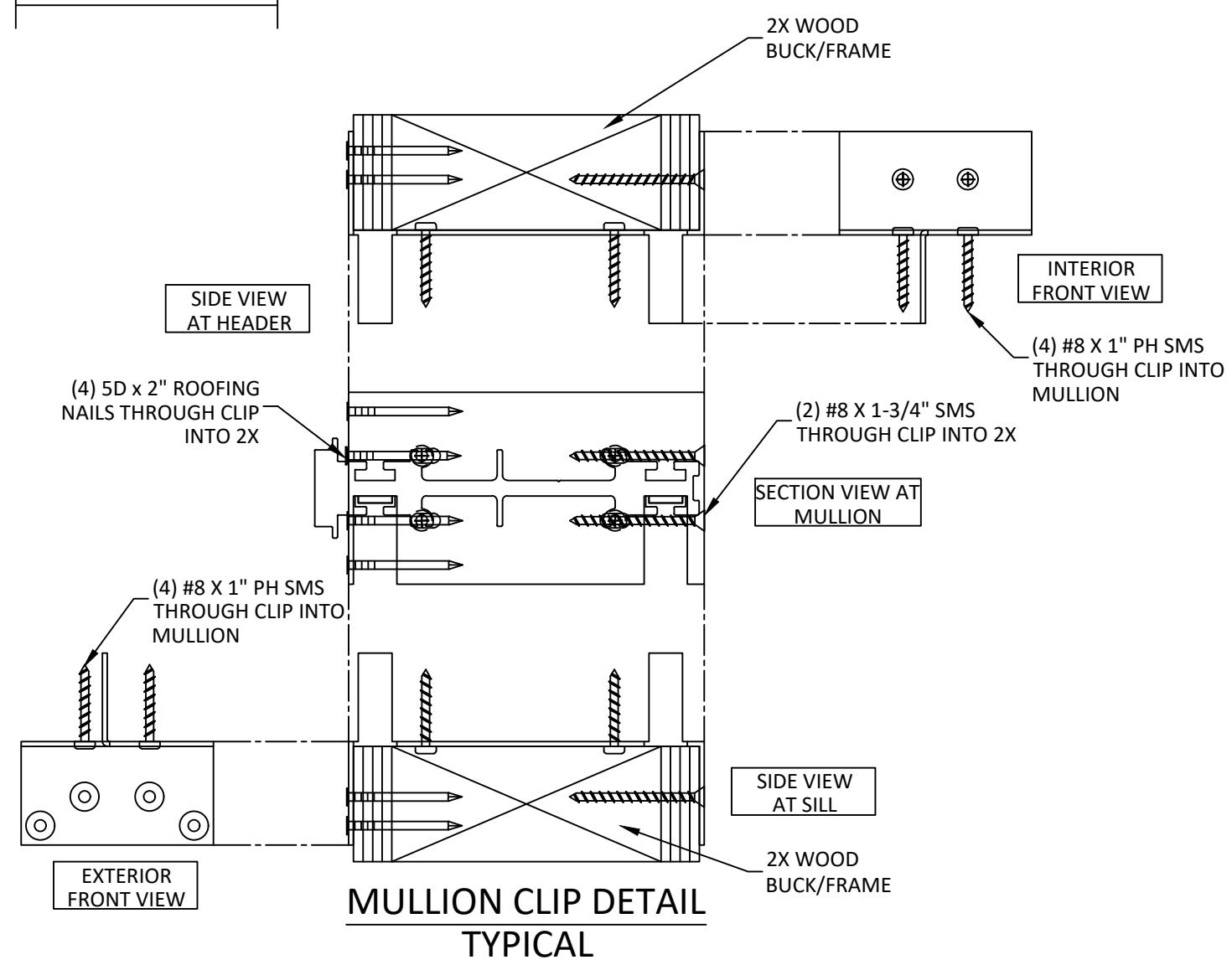
NOTE: REFER TO SHEET 11 FOR HARDWARE INSTALLATION DETAILS

2/21/2023 4:27 PM



H
7

HORIZONTAL SECTION
VERTICAL MULLION, TYP.



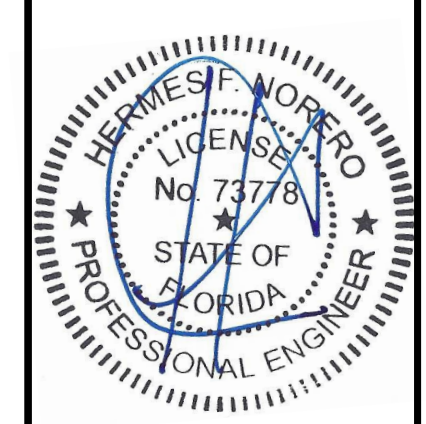
JELD-WEN, inc.
3737 LAKEPORT BOULEVARD
KLAMATH FALLS, OR 97601
PH: (541) 882-3451 FX: (541) 850-2609

TITLE: CUSTOM CLAD EPIC
WOOD OUTSWING DOORS
(WZ3) (IMPACT)
HORIZONTAL SECTIONS
& MULLION CLIP DETAIL

PREPARED BY:
BD
BUILDING DROPS
398 E. DANIA BEACH BLVD., STE. 338
DANIA BEACH, FL 33004
PH: (954) 399-8478
FX: (954) 744-4738
WEB: www.buildingdrops.com

| REMARKS | BY | DATE |
|----------------------------|----|----------|
| ADDITIONAL HARDWARE OPTION | LS | 11.29.16 |
| 7TH FBC CODE CHANGE | SR | 4.07.20 |
| 8TH FBC CODE CHANGE | MG | 2.06.23 |

THE INSTALLATION DETAILS DESCRIBED HEREIN ARE GENERIC AND MAY NOT REFLECT ACTUAL CONDITIONS FOR A SPECIFIC SITE. IF SITE CONDITIONS CAUSE INSTALLATION TO DEVIATE FROM THE REQUIREMENTS DETAILED HEREIN, A LICENSED ENGINEER OR ARCHITECT SHALL PREPARE SITE SPECIFIC DOCUMENTS FOR USE WITH THIS DOCUMENT.



HERMES F. NORERO, P.E.
FLORIDA P.E. No. 73778
BUILDING DROPS, INC
398 E. DANIA BEACH BLVD. # 338
DANIA BEACH, FL 33004
FBPE CERT. OF AUTHORIZATION No. 29578

| | | |
|----------|----------|--------------|
| DATE: | 06.30.15 | |
| DWG. BY: | ADS | CHK. BY: HFN |
| SCALE: | NTS | |
| DWG. #: | JW037 | |

SHEET
7
OF 12

2/21/2023 4:28 PM
z:\projects\jeld-wen\cc-22-1133.1 - fbc submittal - 2023 code change\117568.dwg\117568.1\jw037.dwg

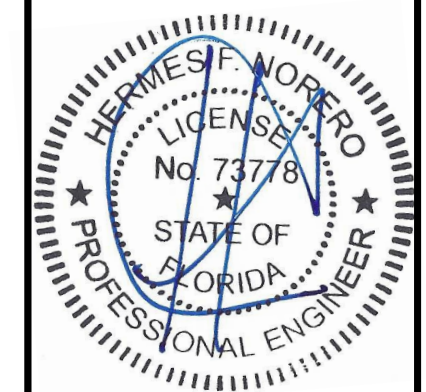
TITLE: CUSTOM CLAD EPIC
WOOD OUTSWING DOORS
(WZ3) (IMPACT)
ALTERNATE INSTALLATION
STRAP DETAILS

PREPARED BY:
BUILDING DROPS, INC.
398 E. DANIA BEACH BLVD., STE. 338
DANIA BEACH, FL 33004
PH: (954) 399-8478
FAX: (954) 744-4738
WEB: www.buildingdrops.com



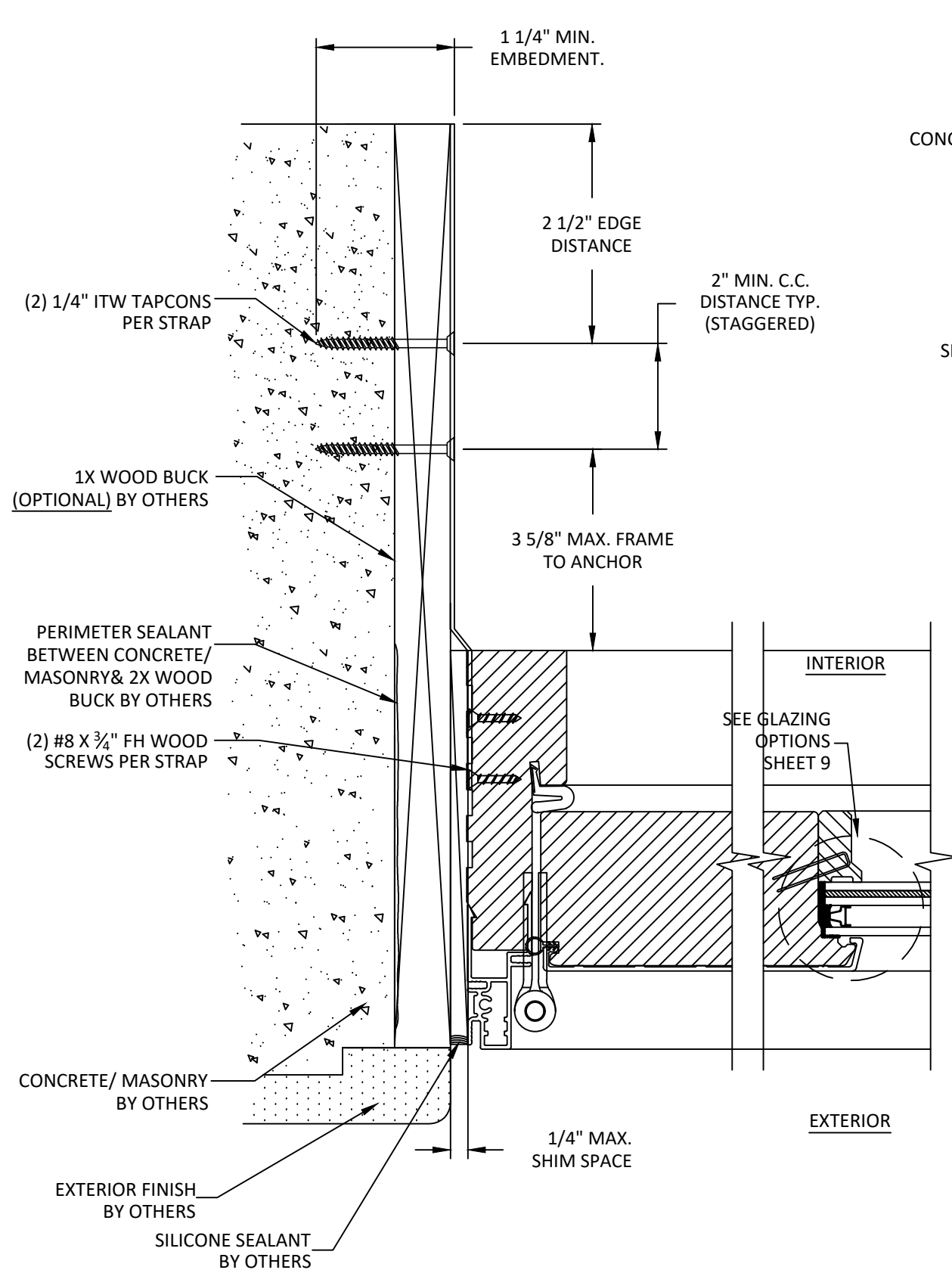
| REMARKS | BY | DATE |
|----------------------------|----|----------|
| ADDITIONAL HARDWARE OPTION | LS | 11.29.16 |
| 7TH FBC CODE CHANGE | SR | 4.07.20 |
| 8TH FBC CODE CHANGE | MG | 2.06.23 |

THE INSTALLATION DETAILS DESCRIBED HEREIN ARE GENERIC AND MAY NOT REFLECT ACTUAL CONDITIONS FOR A SPECIFIC SITE. IF SITE CONDITIONS CAUSE INSTALLATION TO DEVIATE FROM THE REQUIREMENTS DETAILED HEREIN, A LICENSED ENGINEER OR ARCHITECT SHALL PREPARE SITE SPECIFIC DOCUMENTS FOR USE WITH THIS DOCUMENT.

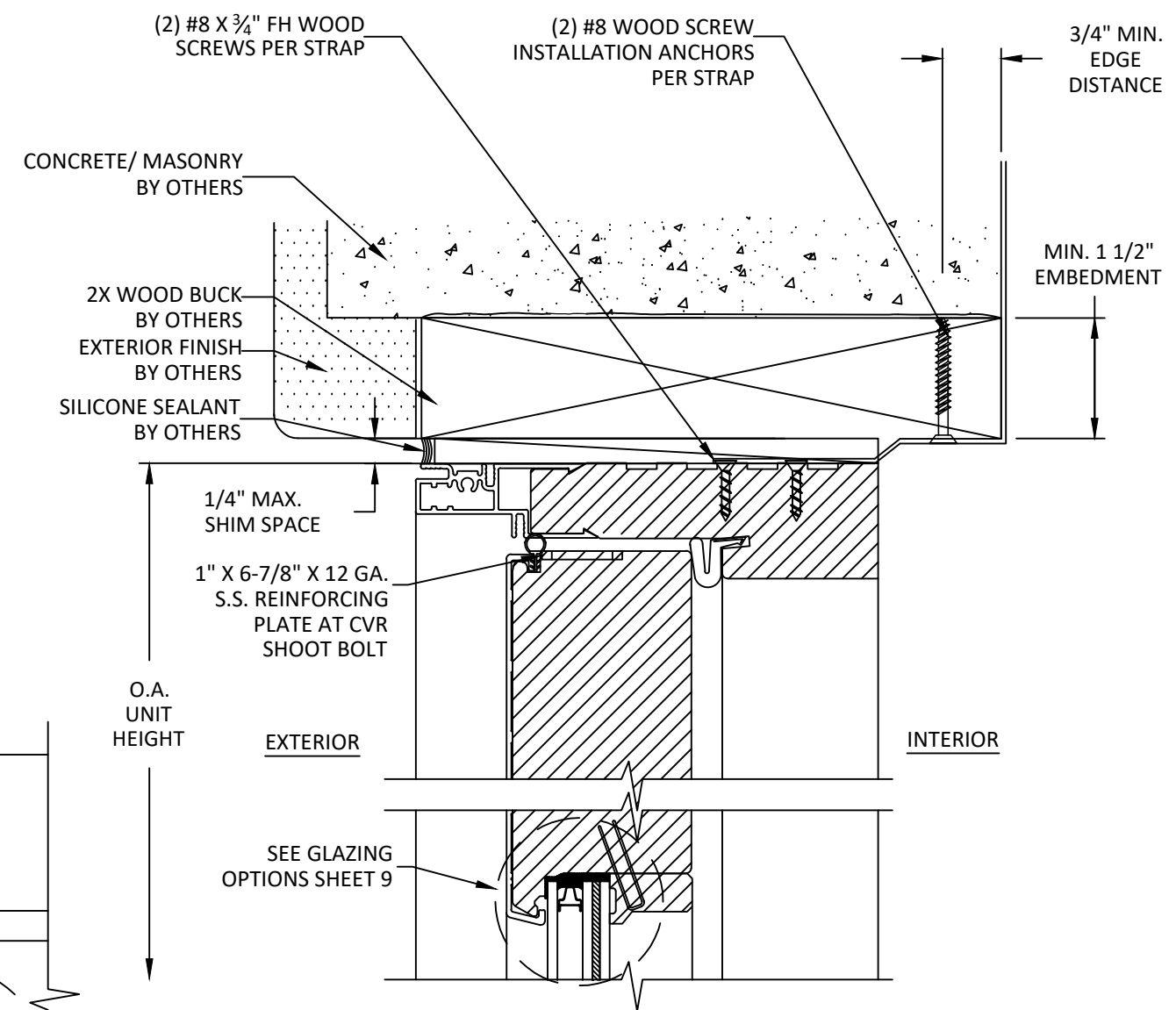


HERMES F. NORERO, P.E.
FLORIDA P.E. No 73778
BUILDING DROPS, INC
398 E. DANIA BEACH BLVD. # 338
DANIA BEACH, FL 33004
FBPE CERT. OF AUTHORIZATION No. 29578

| | | |
|----------|----------|--------------|
| DATE: | 06.30.15 | |
| DWG. BY: | ADS | CHK. BY: HFN |
| SCALE: | NTS | |
| DWG. #: | JW037 | |
| SHEET | 8 | |



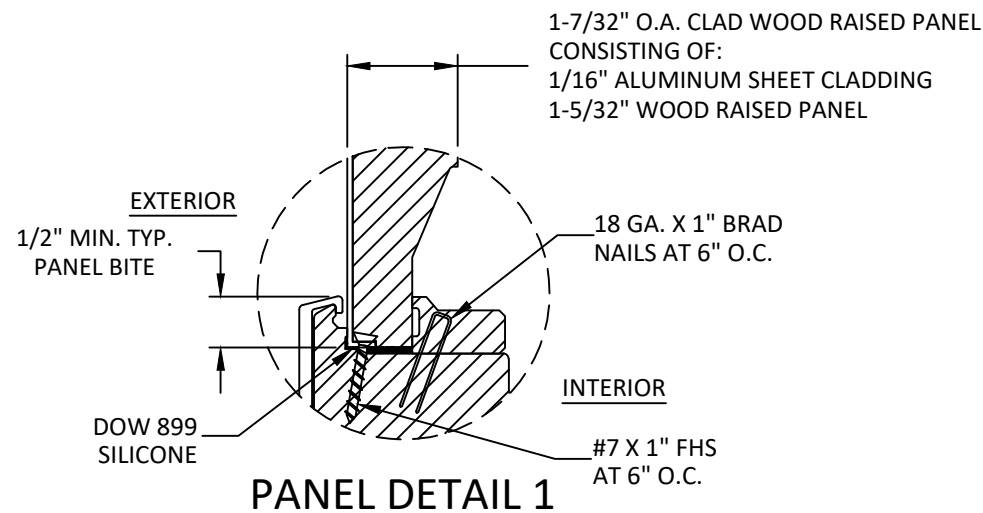
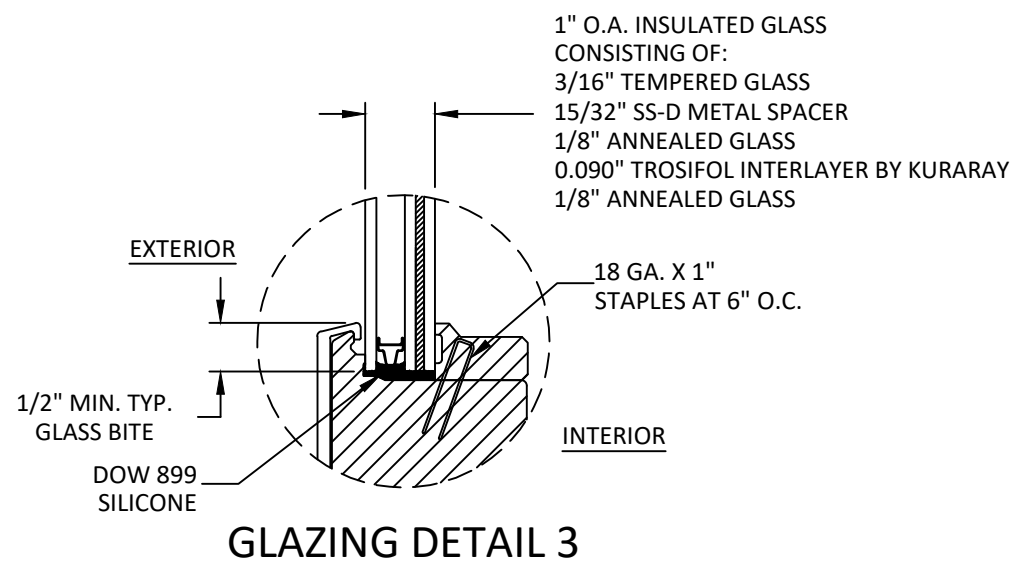
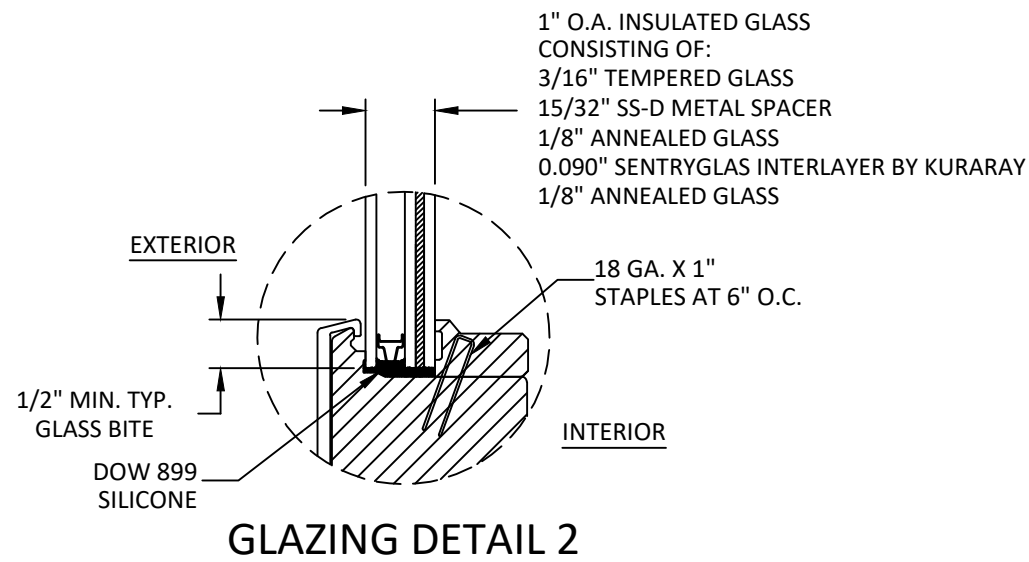
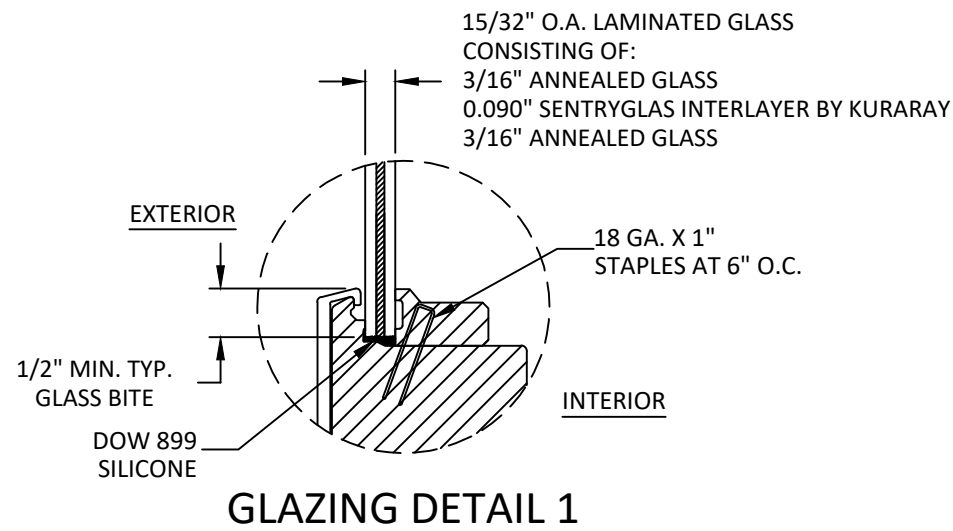
1
8 HORIZONTAL SECTION
SIDELITE JAMB - MASONRY/CONCRETE
ALTERNATE INSTALLATION STRAP



J
8 VERTICAL SECTION
HEAD - 2X WOOD BUCK
ALTERNATE INSTALLATION STRAP

NOTE: REFER TO SHEET 11 FOR HARDWARE INSTALLATION DETAILS AND SHEET 10 FOR HARDWARE STRIKE INSTALLATION DETAILS

z:\projects\jeld-wen\cc-22-1133.1 - fbc submittal - 2023 code change\117568\dwg\117568.1_jw037.dwg



- NOTE:**
1. ALL GLAZING COMPLIES WITH ASTM E1300 REQUIREMENTS AND SAFETY GLAZING REQUIREMENTS AS PER CH 24 OF THE FBC.
 2. SETTING BLOCK DUROMETER HARDNESS OF 70-90 (SHORE A) AS REFERENCED IN CHAPTER 24.
 3. SETTING BLOCKS TO BE LOCATED AT 1/4 SPAN LENGTH FOR GLASS WIDER THAN 36" AS PER CHAPTER 24.
 4. D.L.O. MAY NOT EXCEED MAX DIMENSIONS SHOWN IN ELEVATIONS.

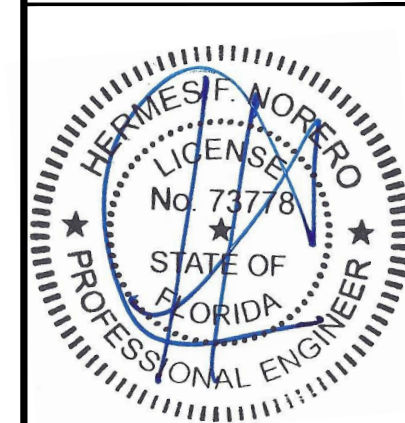
TITLE: CUSTOM CLAD EPIC
WOOD OUTSWING DOORS
(WZ3) (IMPACT)
GLAZING
& RAISED PANEL DETAILS

PREPARED BY:
BUILDING DROPS, INC.
398 E. DANIA BEACH BLVD., STE. 338
DANIA BEACH, FL 33004
PH: (954) 399-8478
FAX: (954) 744-4738
WEB: www.buildingdrops.com

BUILDING DROPS

| REMARKS | BY | DATE |
|----------------------------|----|----------|
| ADDITIONAL HARDWARE OPTION | LS | 11.29.16 |
| 7TH FBC CODE CHANGE | SR | 4.07.20 |
| 8TH FBC CODE CHANGE | MG | 2.06.23 |

THE INSTALLATION DETAILS DESCRIBED HEREIN ARE GENERIC AND MAY NOT REFLECT ACTUAL CONDITIONS FOR A SPECIFIC SITE. IF SITE CONDITIONS CAUSE INSTALLATION TO DEVIATE FROM THE REQUIREMENTS DETAILED HEREIN, A LICENSED ENGINEER OR ARCHITECT SHALL PREPARE SITE SPECIFIC DOCUMENTS FOR USE WITH THIS DOCUMENT.

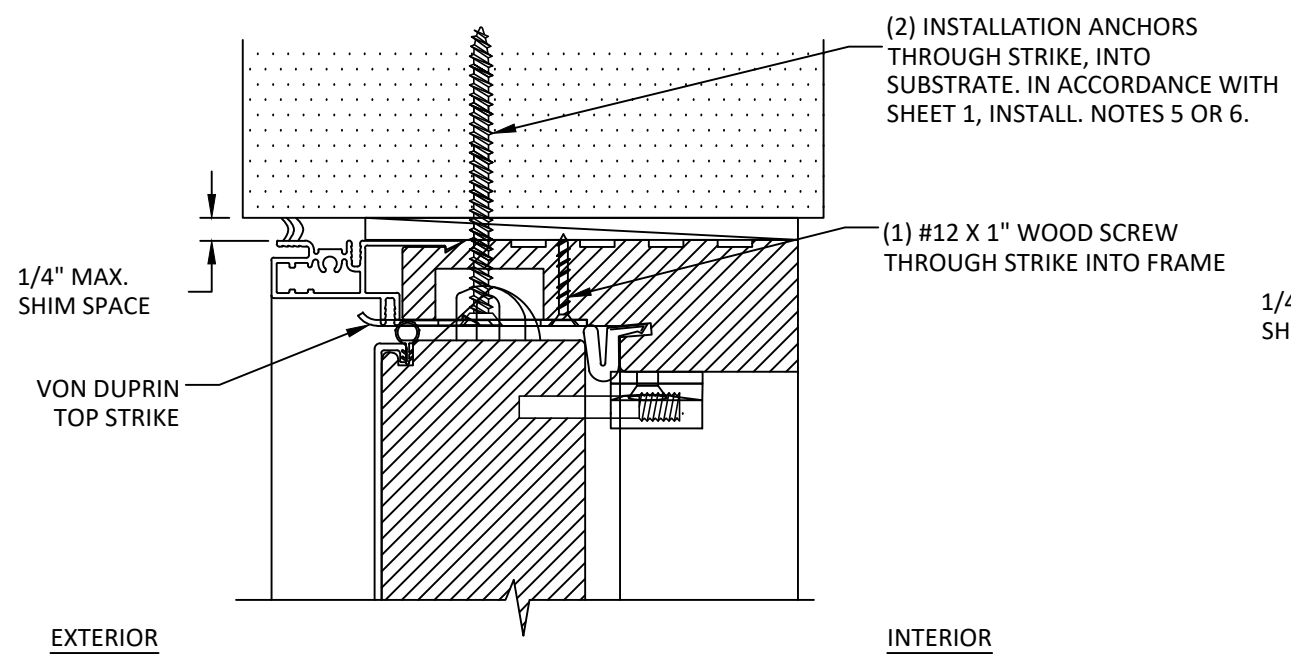


HERMES F. NORERO, P.E.
FLORIDA P.E. No. 73778
BUILDING DROPS, INC.
398 E. DANIA BEACH BLVD. # 338
DANIA BEACH, FL 33004
FBPE CERT. OF AUTHORIZATION No. 29578

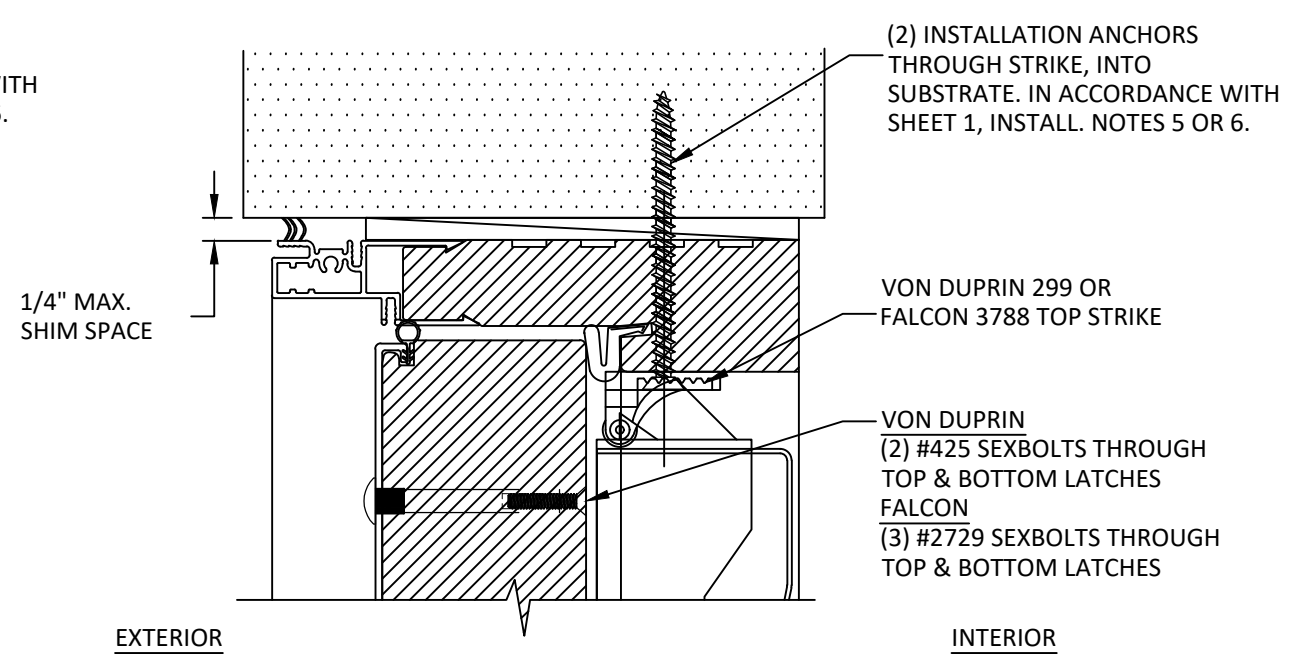
| | |
|----------|-----------------|
| DATE: | 06.30.15 |
| DWG. BY: | ADS |
| CHK. BY: | HFN |
| SCALE: | NTS |
| DWG. #: | JW037 |

SHEET
9
OF 12

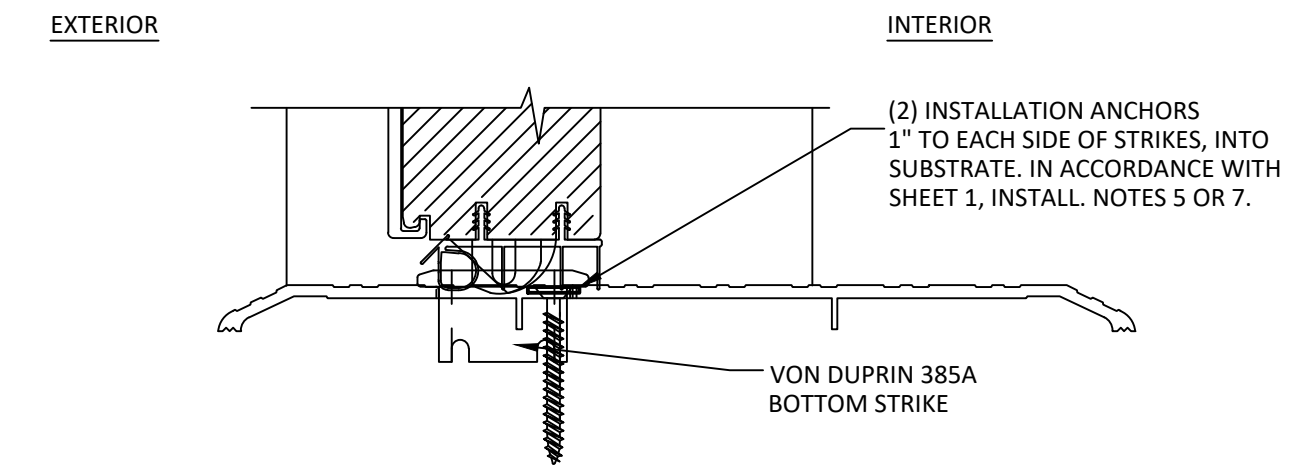
z:\projects\jeld-wen\cc-22-1133.1 - fbc submittal - 2023 code change (f117568)\dwg\17568.1\jw037.dwg



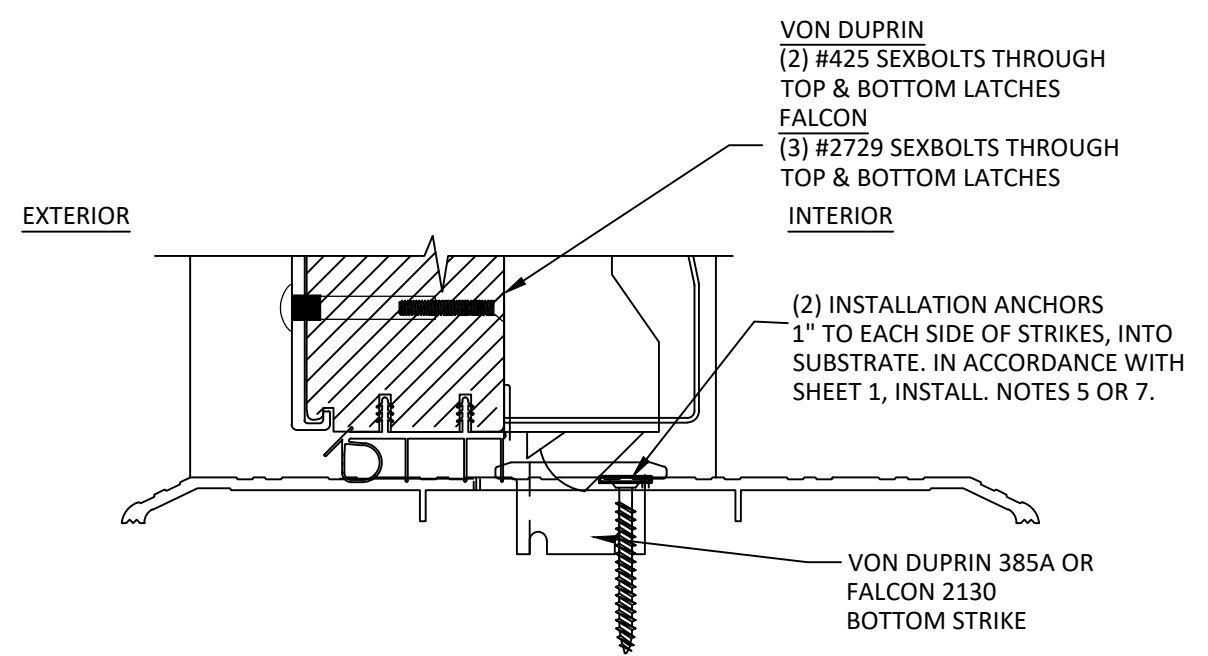
K
10
VERTICAL SECTION
HEAD - STRIKE INSTALLATION
CONCEALED VERTICAL ROD



L
10
VERTICAL SECTION
HEAD - STRIKE INSTALLATION
SURFACE VERTICAL ROD



M
10
VERTICAL SECTION
SILL - STRIKE INSTALLATION
CONCEALED VERTICAL ROD



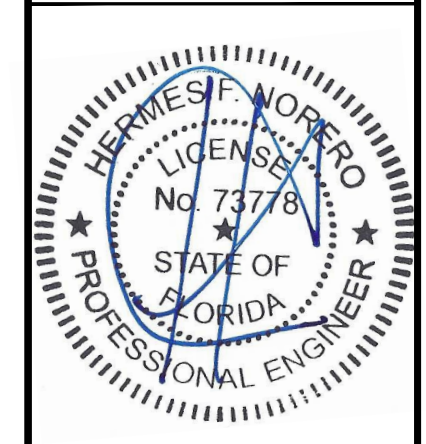
N
10
VERTICAL SECTION
SILL - STRIKE INSTALLATION
SURFACE VERTICAL ROD

TITLE: CUSTOM CLAD EPIC WOOD OUTSWING DOORS (WZ3) (IMPACT) HARDWARE STRIKE INSTALLATION DETAILS

PREPARED BY: BUILDING DROPS, INC. 398 E. DANIA BEACH BLVD., STE. 338 DANIA BEACH, FL 33004 PH: (954)399-8478 FAX: (954)744-4738 WEB: www.buildingdrops.com

| REMARKS | BY | DATE |
|----------------------------|----|----------|
| ADDITIONAL HARDWARE OPTION | LS | 11.29.16 |
| 7TH FBC CODE CHANGE | SR | 4.07.20 |
| 8TH FBC CODE CHANGE | MG | 2.06.23 |

THE INSTALLATION DETAILS DESCRIBED HEREIN ARE GENERIC AND MAY NOT REFLECT ACTUAL CONDITIONS FOR A SPECIFIC SITE. IF SITE CONDITIONS CAUSE INSTALLATION TO DEVIATE FROM THE REQUIREMENTS DETAILED HEREIN, A LICENSED ENGINEER OR ARCHITECT SHALL PREPARE SITE SPECIFIC DOCUMENTS FOR USE WITH THIS DOCUMENT.



HERMES F. NORERO, P.E.
FLORIDA P.E. No. 73778
BUILDING DROPS, INC.
398 E. DANIA BEACH BLVD. # 338
DANIA BEACH, FL 33004
FBPE CERT. OF AUTHORIZATION No. 29578

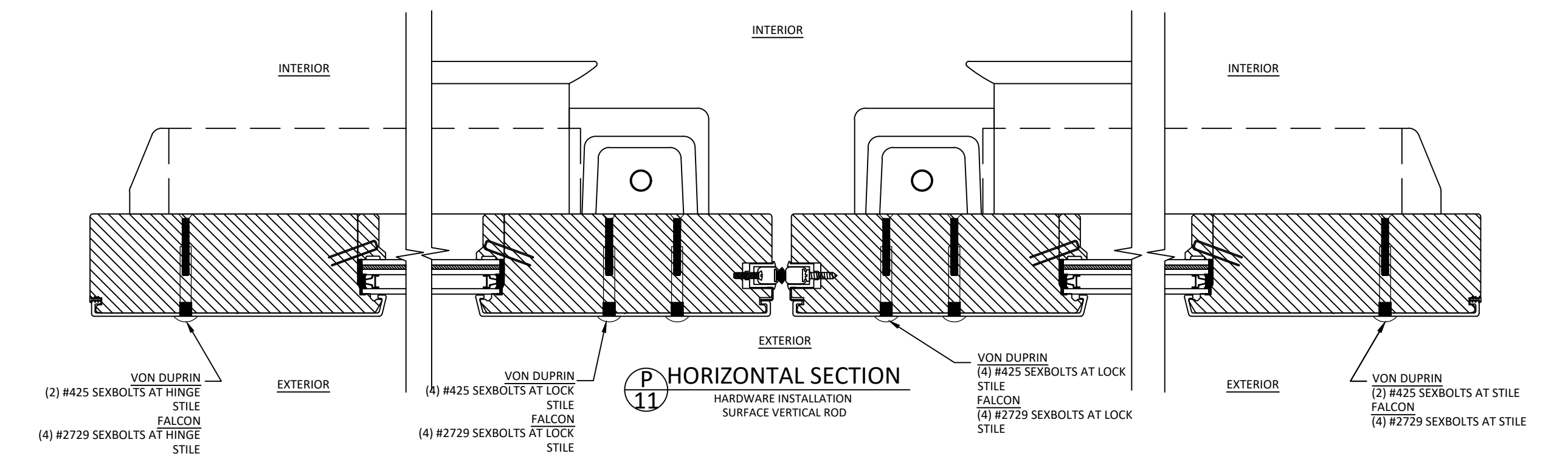
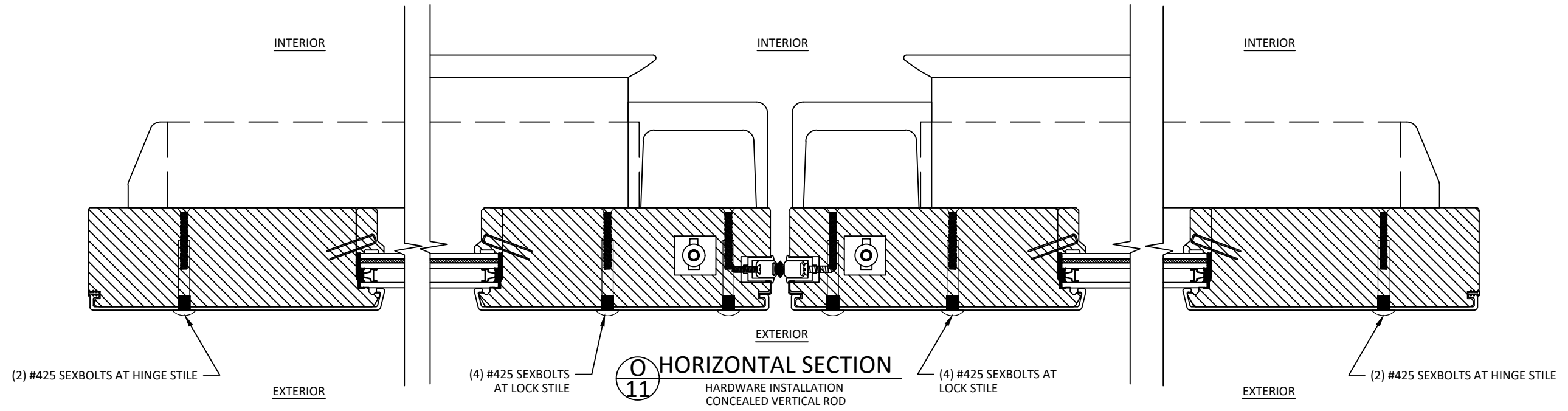
| | | |
|----------|----------|--------------|
| DATE: | 06.30.15 | |
| DWG. BY: | ADS | CHK. BY: HFN |
| SCALE: | NTS | |
| DWG. #: | JW037 | |

SHEET
10
OF 12

z:\projects\jeld-wen\cc-22-1133.1 - fbc submittal - 2023 code change\dwg\17568.1\jw037.dwg

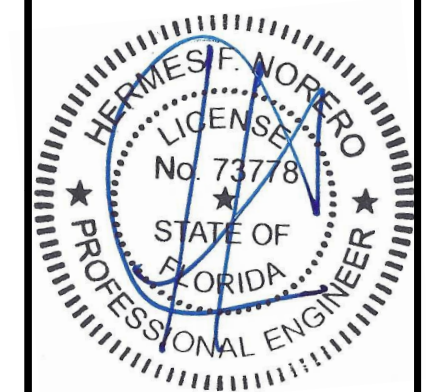
TITLE: CUSTOM CLAD EPIC
WOOD OUTSWING DOORS
(WZ3) (IMPACT)
TYPICAL HORIZONTAL SECTIONS

PREPARED BY:
BUILDING DROPS, INC.
398 E. DANIA BEACH BLVD., STE. 338
DANIA BEACH, FL 33004
PH: (954) 399-8478
FAX: (954) 744-4738
WEB: www.buildingdrops.com



| REMARKS | BY | DATE |
|----------------------------|----|----------|
| ADDITIONAL HARDWARE OPTION | LS | 11.29.16 |
| 7TH FBC CODE CHANGE | SR | 4.07.20 |
| 8TH FBC CODE CHANGE | MG | 2.06.23 |

THE INSTALLATION DETAILS DESCRIBED HEREIN ARE GENERIC AND MAY NOT REFLECT ACTUAL CONDITIONS FOR A SPECIFIC SITE. IF SITE CONDITIONS CAUSE INSTALLATION TO DEVIATE FROM THE REQUIREMENTS DETAILED HEREIN, A LICENSED ENGINEER OR ARCHITECT SHALL PREPARE SITE SPECIFIC DOCUMENTS FOR USE WITH THIS DOCUMENT.



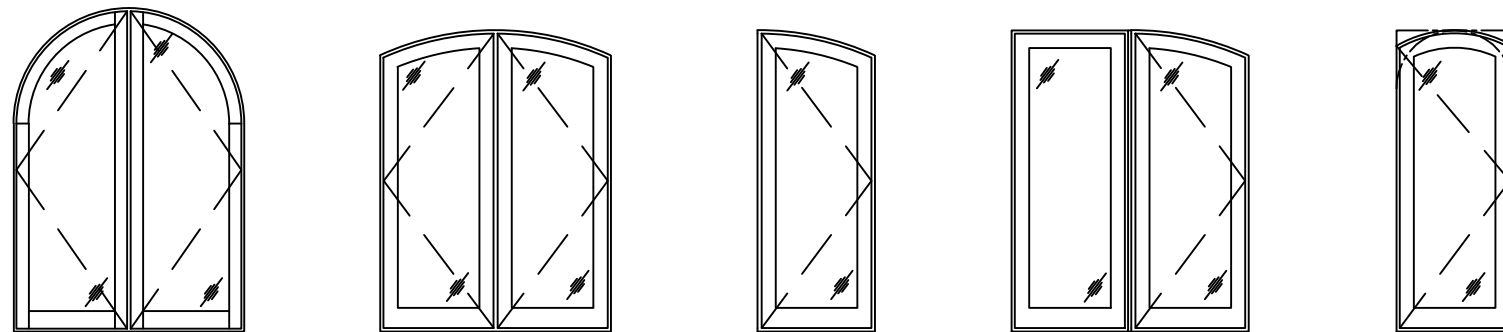
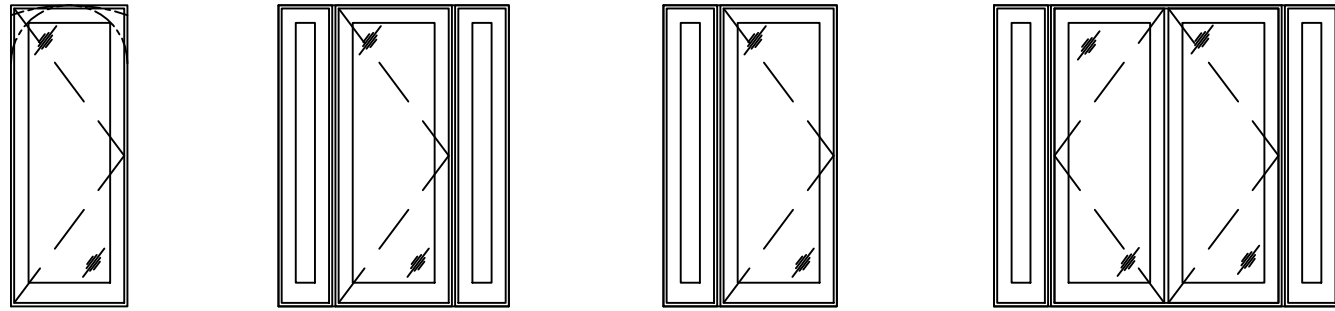
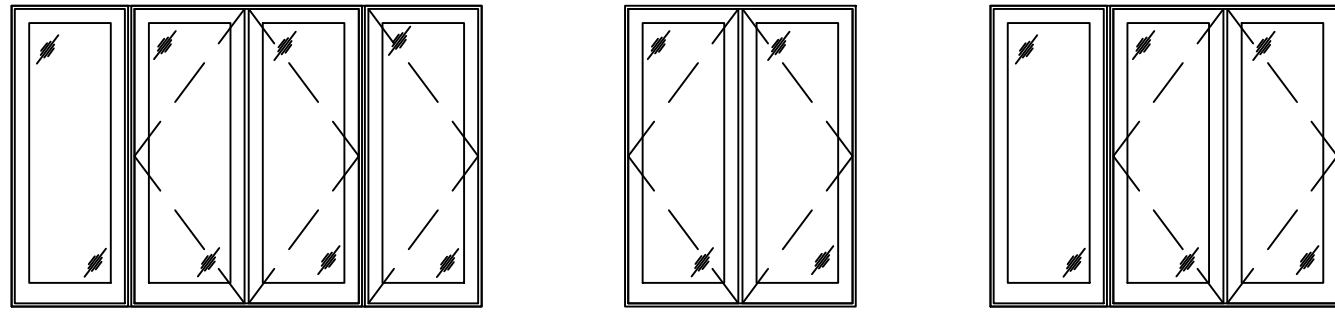
HERMES F. NORERO, P.E.
FLORIDA P.E. No. 73778
BUILDING DROPS, INC
398 E. DANIA BEACH BLVD. # 338
DANIA BEACH, FL 33004
FBPE CERT. OF AUTHORIZATION No. 29578

| | | |
|----------|----------|--------------|
| DATE: | 06.30.15 | |
| DWG. BY: | ADS | CHK. BY: HFN |
| SCALE: | NTS | |
| DWG. #: | JW037 | |

SHEET
11
OF 12

z:\projects\jeld-wen\cc-22-1133.1 - fbc submittal - 2023 code change\117568.dwg\117568.1\jw037.dwg

TYPICAL QUALIFIED CONFIGURATIONS



- NOTES:**
1. CONFIGURATIONS SHOWN ARE TYPICAL AND FOR ILLUSTRATION PURPOSES ONLY.
 2. ALL QUALIFIED CONFIGURATIONS SHALL ADHERE TO THE MAXIMUM LISTED SIZES AND PRESSURES IN THIS APPROVAL.
 3. ARCHED UNITS ARE ALLOWABLE AND SHALL BE INSCRIBED INTO THE MAXIMUM RECTANGULAR AREA LISTED IN THE APPROVAL.



JELD-WEN, inc.
3737 LAKEPORT BOULEVARD
KLAMATH FALLS, OR 97601
PH: (541) 882-3451 FX: (541) 850-2609

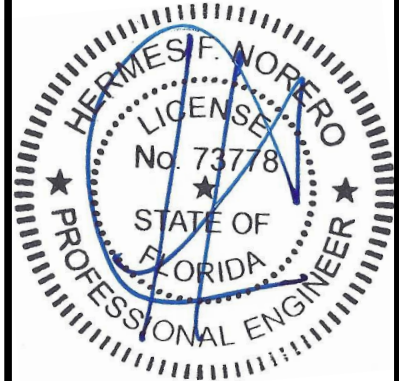
TITLE: CUSTOM CLAD EPIC
WOOD OUTSWING DOORS
(WZ3) (IMPACT)
TYP. QUALIFIED
CONFIGURATIONS

PREPARED BY:
BUILDING DROPS, INC.
398 E. DANIA BEACH BLVD., STE. 338
DANIA BEACH, FL 33004
PH: (954) 959-8478
FAX: (954) 744-4738
WEB: www.buildingdrops.com



| REMARKS | BY | DATE |
|----------------------------|----|----------|
| ADDITIONAL HARDWARE OPTION | LS | 11.29.16 |
| 7TH FBC CODE CHANGE | SR | 4.07.20 |
| 8TH FBC CODE CHANGE | MG | 2.06.23 |

THE INSTALLATION DETAILS DESCRIBED HEREIN ARE GENERIC AND MAY NOT REFLECT ACTUAL CONDITIONS FOR A SPECIFIC SITE. IF SITE CONDITIONS CAUSE INSTALLATION TO DEVIATE FROM THE REQUIREMENTS DETAILED HEREIN, A LICENSED ENGINEER OR ARCHITECT SHALL PREPARE SITE SPECIFIC DOCUMENTS FOR USE WITH THIS DOCUMENT.



HERMES F. NORERO, P.E.
FLORIDA P.E. No. 73778
BUILDING DROPS, INC.
398 E. DANIA BEACH BLVD. # 338
DANIA BEACH, FL 33004
FBPE CERT. OF AUTHORIZATION No. 29578

| | | |
|----------|----------|--------------|
| DATE: | 06.30.15 | |
| DWG. BY: | ADS | CHK. BY: HFN |
| SCALE: | NTS | |
| DWG. #: | JW037 | |

SHEET
12
OF 12